

EXPRESSI®

LATESSA

multi - beverage
capsule machine
with integrated
milk frothing



MANUAL



Safety instructions	4 - 8
Machines – overview	9
Items included	9
Milk foaming unit – overview	10
Milk container – overview	11
Overview of buttons and symbols	12
Startup	13 - 14
Optional: Insert water filter	15
Optional: Activate/deactivate the water filter	16
Setting the water hardness	17
Prepare drinks	18
Programming cup capacity	19
Frothing milk with/without milk container	20
Cleaning overview	21
Rinsing the milk foaming unit	22
Cleaning the milk foaming unit following its last use	23
Cleaning the milk foaming unit daily	24 - 25
Cleaning the machine daily	26
Optional: Cleaning the machine with a cleaning capsule (recommended)	27 - 28
Cleaning the machine with cleaning liquid (alternatively)	29 - 30
Descaling the machine	31 - 32
Setting the automatic switchoff mechanism	33
Evaporating remaining water	34
Frequently asked questions	35 - 36
Specifications and service contact	37
Notes on disposal	37
Guarantee terms	38

Symbols and warnings



The warning triangle is used in the instructions where risks can result to the user or the machine when the safety instructions are not followed.



Warning: electric shock



Warning: danger of scalding



Prohibited: do not reach into machine!



Prohibited: do not drink!



Instruction: read instructions!



Recommendation



Recommended action

If you fail to comply with the operating instructions and safety instructions, the machine may become dangerous to operate. Please retain the operating instructions and pass them on with the machine should this be passed on.

Do not start the machine if it is damaged or if it does not work properly. In that case, immediately pull the plug out of the mains socket and contact the Service Hotline.

The machine is designed and manufactured for domestic use. The manufacturer assumes no liability for consequences arising from commercial use, use not in compliance with its intended purpose or noncompliance with the operating manual. This machine is intended to make hot drinks as stipulated in the operating instructions.

This machine is intended for use in households and similar areas, such as staff rooms in offices and shops, as well as other work work-related facilities; also in farms, for use by guests in hotels, motels and bed & breakfast establishments. The machine may only be used for its intended purpose.

In case of long periods of absence, vacation etc., the machine must be emptied, cleaned and the mains plug must be removed from the socket.

When there is risk of frost, all residual water must be removed, see the section on "Evaporating remaining water" on page 34.

The mains voltage must match the specifications on the nameplate. Only connect the machine to a grounded 3-pin wall socket. In the case of an incorrect connection your warranty rights may be forfeited.

Do not damage the mains cord by placing it on or near hot objects or over sharp edges. Do not allow the mains cord to hang down (risk of tripping). Do not touch the mains cord with wet hands. Do not pull the plug from the socket by pulling on the cable. If the mains cord shows signs of damage, do not start the machine.

When the mains cable of the machine is damaged it must be replaced by the manufacturer, the respective customer service or a similarly qualified person in order to avoid any hazards.

Do not place the machine on a hot surface (e.g. cooker) or operate it next to heat sources or fires. Do not place the appliance on its mains cable. Always place the machine on a stable, flat and water-repellent surface.

For health reasons, only fill the water tank with fresh drinking water.

How to avoid injuries and scalds when using the machine.

Do not leave the machine unattended during beverage preparation.

This machine can be used by children from the age of 8 years and older and by persons with reduced physical, sensory or mental abilities or who lack experience and knowledge provided they are supervised or have been instructed regarding the safe operation of the machine, and understand the resulting dangers.

Cleaning or servicing of the machine that is normally carried out by the user must not be carried out by children unless they are 8 years old or older and act under supervision.

The machine and its connection cable must be kept out of the reach of children younger than 8 years. Children must not play with the machine.

Never open the lever on the machine during the brewing, rinsing, cleaning or descaling processes. Do not hold your fingers under the dispensing spout after completing a process and when opening the lever. There is a risk of scalding due to residual liquid discharging! When the brewing process has been completed, slowly open the lever in order to eject the capsule; do not bend over the capsule insertion opening (risk of hot liquid sprays).

Never reach with your fingers into the capsule insertion opening - risk of injury!

Do not touch the milk foaming unit when it is in operation - risk of burning injuries!

Do not hold your fingers under the milk discharge spout. Risk of scalding from hot milk froth, steam jet or residual liquid discharge!

The milk foaming unit must never be blocked with dried milk residue; after any dismantling reassemble carefully ensuring all parts are fitted correctly to the steam outlet. Any unsecured parts may dislodge during operation and cause injury.

Do not use the machine without drip tray and drip grating! Do not overfill the water tank. Never lift the machine by its lever.

Store the machine and all its accessories outside the reach of children.

Never open the machine or insert objects into the machine openings.

In order to avoid any hazards, any work beyond the normal use of the machine, its cleaning, descaling and maintenance, such as repairs or replacing the mains cable may only be carried out by a customer service authorised by the manufacturer.

Before cleaning the exterior of the machine, unplug the mains cord and allow the machine to cool down.

The machine and mains cable and connector must not be cleaned wet or immersed in liquids.

Do not clean the machine under running water. Never put the machine or its parts into a dishwasher.

Refer to the instructions for use of all cleaning and descaling agents before use and comply with the safety regulations.

Safety instructions
(continued)

Never use a damaged or deformed capsule. Only use drink capsules marked with the K-fee® System logo that are intended for the machine.



Only use original K-fee® System capsules! Note the red K-fee® System logo and the characteristic slotted capsule shape.

Using non-original capsules involves the following risks:

1. Health hazards

When using non-original capsules, differences in the brewing process and the capsule design can cause hot water to escape under high pressure - risk of scalding!

2. Damage to the machine and warranty

When using non-original capsules, differences in the brewing process and the capsule design will cause damage to the machine which means that any warranty claims may be forfeited!

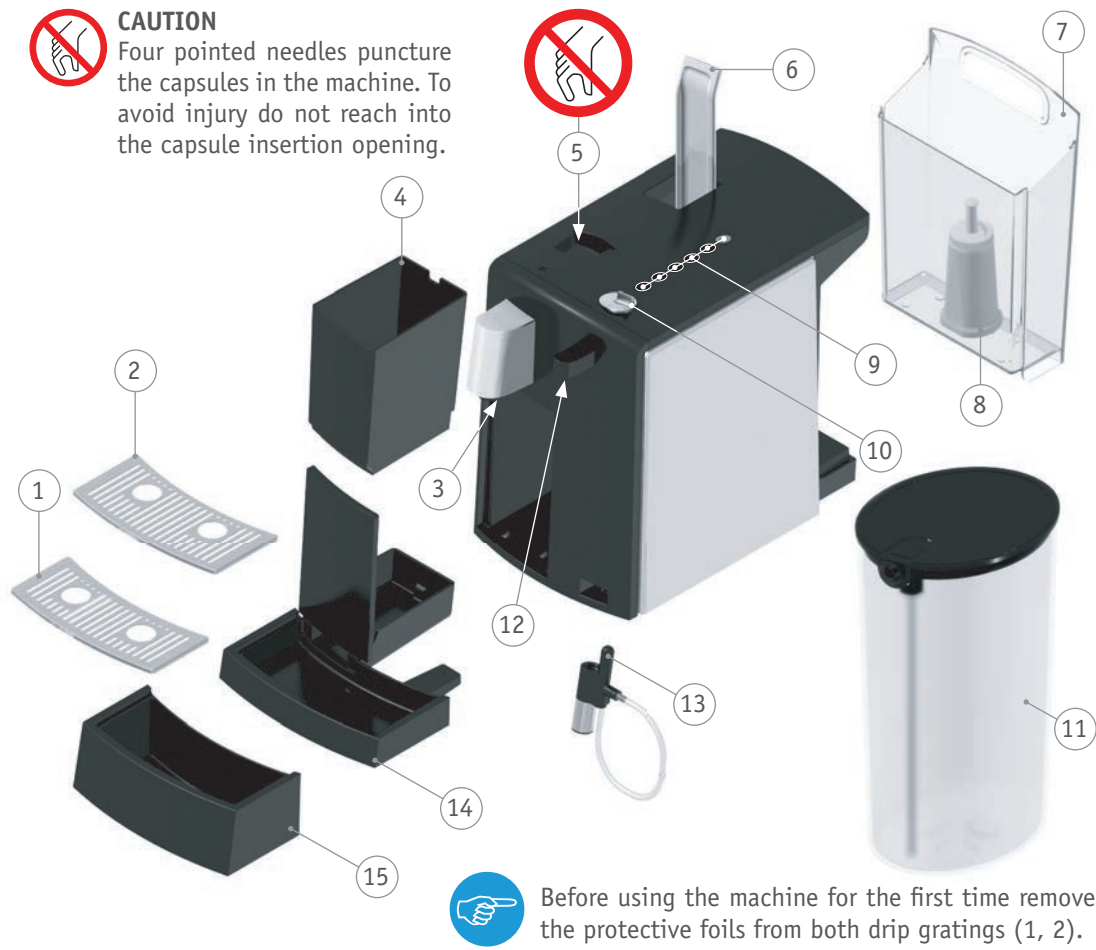
The manufacturer and his distribution partner cannot be held liable for any injury or damage which is the direct or indirect result of non-original capsules being used with this machine.

These operating instructions are also available by request from
kfee@k-fee-system.com.au



CAUTION

Four pointed needles puncture the capsules in the machine. To avoid injury do not reach into the capsule insertion opening.



Machine - overview / items included

- 1 Upper drip grating
- 2 Lower drip grating
- 3 Beverage spout
- 4 Spent capsule container
- 5 Capsule insertion opening
- 6 Lever
- 7 Water tank
- 8 Water filter (optional)
- 9 Controls
- 10 Rotary switch
- 11 Milk container
- 12 Steam outlet
- 13 Milk foaming unit
- 14 Lower drip tray
- 15 Upper drip tray



The delivered package includes the parts shown in the illustration and these original operating instructions. Before starting up the machine, please check that you have received all parts. Optional content: water filter, 2 cleaning capsules



Before using the machine for the first time remove the protective foils from both drip gratings (1, 2).

Milk foaming unit – overview

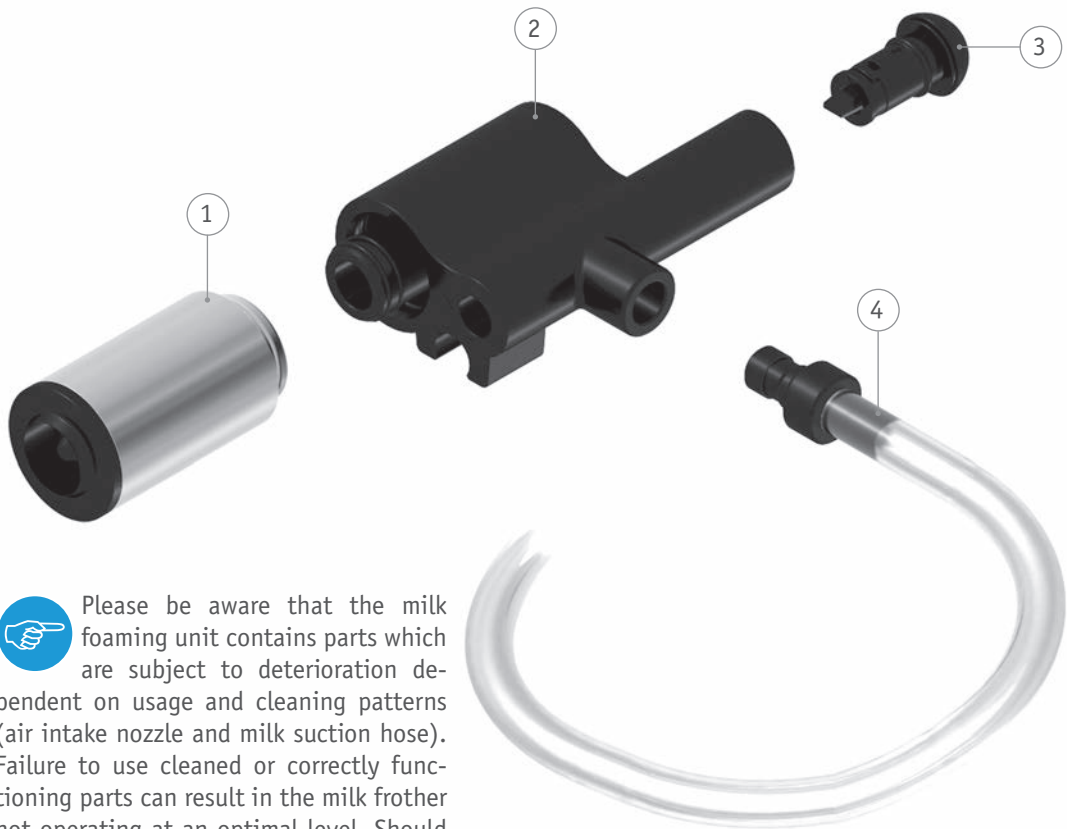
- 1 Spout
- 2 Body
- 3 Air intake nozzle
- 4 Milk suction hose



To ensure the proper function of the milk foaming unit, the nozzle must be regularly cleaned. For this purpose please take note of the cleaning recommendations in these operating instructions (p. 22 - 25).



Please be aware that the milk foaming unit contains parts which are subject to deterioration dependent on usage and cleaning patterns (air intake nozzle and milk suction hose). Failure to use cleaned or correctly functioning parts can result in the milk frother not operating at an optimal level. Should you need replacement parts please contact the K-fee Customer Service Centre (p.37).





Milk container – overview

- 1 Cover
- 2 Container
- 3 Sealing stud (2x)
- 4 Milk suction tube
- 5 Connection hose















The milk container has to be emptied and cleaned regularly in order to function properly and for hygiene reasons. When cleaning the milk container take it apart and rinse the individual parts thoroughly with hot water.




Please remember that the connection hose and the sealing studs of the milk container are subject to 'wearing' over time. Should you need replacement parts please contact our K-free Customer Service Centre (p. 37).

Overview of buttons and symbols

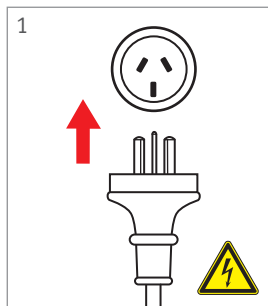
Button symbols		Light signals	
	On/Off button		Extra large cup
	Small cup		Milk button
	Large cup		Rinse button
Rotary switch symbols			Buttons light up white: ready for operation, buttons can be pressed.
	Milk foaming unit "Off" / drink dispensing		Buttons flashing white: please wait. The machine is either heating up, dispensing a drink or rinsing.
	Milk foaming unit "On"		Rinse button flashes red: apply descaling, turn rotary switch to drink dispensing.



WARNING
The machine produces very hot water (for brewing, descaling, cleaning and rinsing). In order to prevent scalding and other injuries always ensure that the lever is fully closed when the machine is running. Do not reach under the spout and do not remove the drip tray.



WARNING
The machine creates very hot steam when frothing milk. Do not remove the milk foaming unit nozzle during operation as this could lead to scalding or other injuries. Allow milk foaming unit to cool down after use before removing it for cleaning.



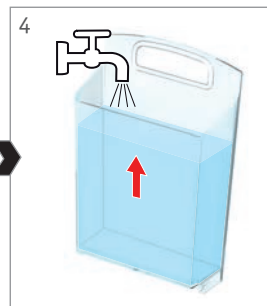
Before starting up the machine, check the voltage on the type plate (see underside of machine).



Insert the milk foaming unit on the steam outlet.



Take out the water tank.



Fill the tank with fresh water.



Re-insert the water tank.



Switch the machine on. The rotary switch must be set to "drink dispensing".



Close the lever completely. Place a container under the spout.



Press rinse button. The rinsing process starts.

Startup



Read the safety instructions before starting up the machine (p. 4 - 8).



If the machine was exposed to temperatures below freezing, please wait at least 3 hours before switching it on so that it can warm up to room temperature. When the machine is frozen or very cold it is possible that it does not function properly.



Risk of scalding!
Very hot water.



Before using the machine for the first time, run 4 rinsing cycles. To do that, press the rinse button once the previous rinsing process has been completed. When using a water filter, please read the instructions on page 15.

Startup (continued)



Risk of scalding!

Very hot steam and hot water.



Wait until rinsing process has finished. Then empty the container.



Place a container under the milk foaming unit.



Immerse the end of the suction hose into a second container with approx. 250 ml of cold water.

Optional: fill milk container with approx. 250 ml of cold water and connect to milk foaming unit.



When the machine is ready, all buttons light up white - except the On/Off button.



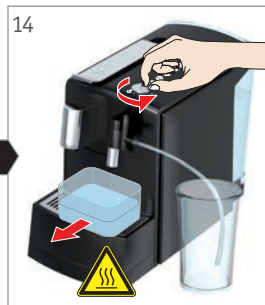
When the machine is switched on, the rotary switch must be set to "drink dispensing". If this is not the case, the rinse button will very quickly start to flash red.



Turn the rotary switch to milk frothing. The rinsing process starts.



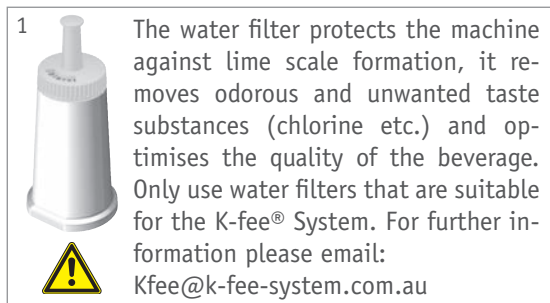
Wait until the milk container is empty.



Turn the rotary switch back to drink dispensing. Empty the full container.



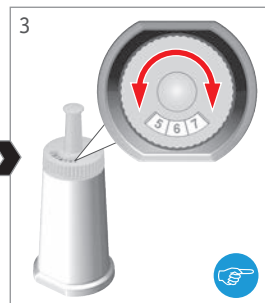
The appliance is ready for operation.



If a water filter is used, the machine has to be activated for the water filter (p. 16). The filter should be changed every 3 months.



Take out the water tank and empty it.



Set the expiry date at the new water filter.

Optional: Insert water filter



Safety instruction!

Please carefully read the water filter operating and safety instructions. For reasons of hygiene we recommend replacing the water filter at least every 3 months.



Use the rotary scale to set the month for the next filter change.

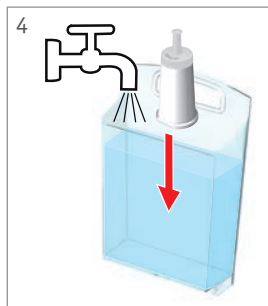


Rinse several times after inserting a new filter until the system is again ready for use.



Risk of scalding!

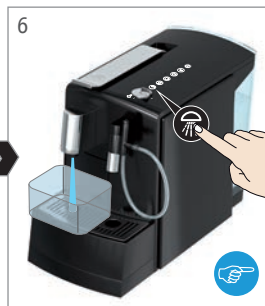
Very hot water.



Insert new water filter and push down firmly. Fill water tank with fresh water.



Insert water tank. Place a container under the spout.





Press the rinse button. The rinsing process starts.

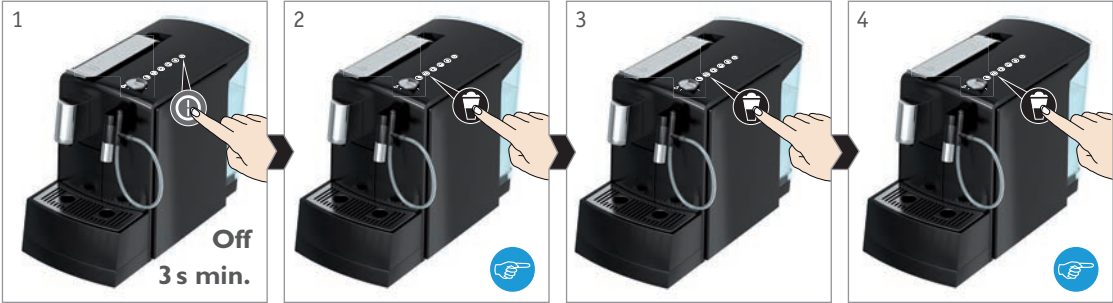


Empty the container.

Optional: Activate / deactivate the water filter

 To cancel the setting, press the On / Off button.

 The "small cup", "large cup" and milk button flash once as confirmation.






1
Switch off appliance.

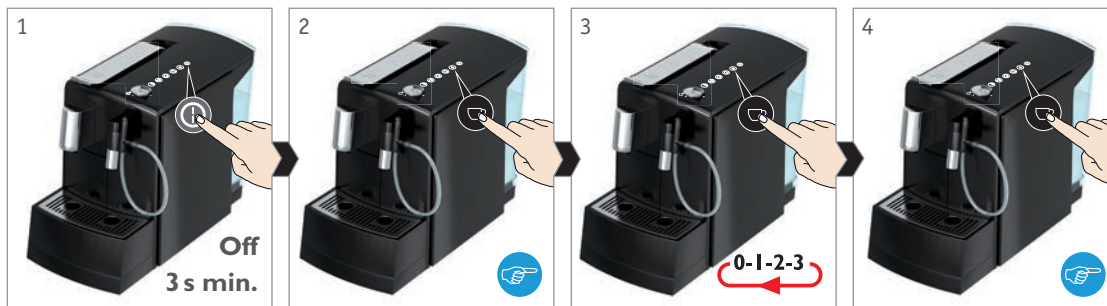
2
Press the milk button for at least 3 seconds. The current setting is displayed.

3
Activate / deactivate the water filter by pressing the milk button again (see table).

4
Press the milk button for at least 3 seconds to save the setting.

Water filter	deactivated	activated
Button(s) lighting up		 

After inserting a water filter this setting has to be activated. This significantly extends the period until the next descaling is required. In addition to the water filter, the machine takes into account the selected water hardness for determining the descaling interval (p. 17).



Switch off appliance.

Press the "small cup" button for at least 3 seconds. The current setting is displayed.

Press the "small cup" button repeatedly to call up the required setting (see table).

Press the "small cup" button for at least 3 seconds to save the setting.

Water hardness overview		
Water hardness	[mmol]	Degrees German hardness [°d]
1 (soft)	< 1.3	< 7
2 (medium)	1.3 - 2.5	7 - 14
3 (hard)	2.5 - 3.8	14 - 21

Setting / water hardness	1 soft	2 medium	3 hard
Button(s) lighting up			

Setting the water hardness



To cancel the setting, press the On / Off button.



The "small cup", "large cup" and milk button flash once as confirmation.



As soon as descaling is required, the rinse button starts flashing red every time a drink is dispensed. You should then descale the machine (p. 31-32). The period until the next descaling depends on the selected water hardness.



For further information regarding water hardness in your area, contact your water company.

Prepare drinks (e.g. espresso)



The machine switches off automatically if it is not used within a preselected time period (p. 33). If necessary, use the on/off button to re-activate the machine before preparing new drinks. Carry out steps 6-9 of the startup now. Important: this has to happen before inserting the capsule because the machine first prompts for rinsing.



Risk of scalding!
Very hot water.



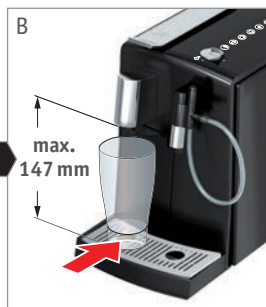
The brewing process can be stopped by pressing any button a second time.



Adjust drip trays to the required cup size.



With upper drip tray.



With lower drip tray.



Open the lever and insert capsule.



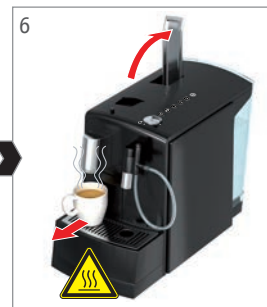
Close the lever completely and choose a cup size.



The brewing process starts.



Beverage dispensed.



Open lever, capsule falls into container.



Switch the machine on.

Place the required cup under the spout.

Insert the required capsule. Close the lever completely.



Keep the required button (e.g. "small cup") depressed for at least 3 seconds in order to start the programming process. Proceed to keep the button depressed until the required fill quantity has been reached.

Programming cup capacity

Button	Factory setting [ml]	Setting range [ml]
	45	30 - 100
	105	80 - 200
	200	100 - 240
	65	65 - 130
	45	—



Risk of scalding!
Very hot drink.



It is possible to reset the machine to the factory settings (p. 36).

Use milk container to froth up the milk



The consistency and quality of the milk froth depends on the milk used.



Risk of scalding!

Very hot milk froth.

Frothing the milk without milk container



Use the long suction hose of the milk foaming unit.



Risk of scalding!

Very hot milk froth.



1 Fill the milk container with max. 0.9 l of refrigerated milk and connect it to the milk foaming unit.



2 Place a large glass or cup under the milk foaming unit.



3 To froth the milk turn the rotary switch to milk froth in one swift move. Stop the frothing by returning the switch.



4 Combine the milk froth with a beverage of your choice.



1 Immerse the suction hose in a container with milk (or milk carton) so that it touches the base.



2 Place a large glass or cup under the milk foaming unit.



3 To froth the milk turn the rotary switch to milk froth in one swift move. Stop the frothing by returning the switch.



4 Combine the milk froth with a beverage of your choice.

Machine component	Cleaning process	Interval	Page
Milk foaming unit with milk suction hose 	To be rinsed with clear water	directly after each use	22
	Take milk foaming unit apart and rinse parts with hot water	after it was used last (not in use for more than 5 min.)	23
	Cleaning parts with a cleaning solution	daily	24 - 25
Milk container with connection hose 	Take milk container apart and rinse with hot water	after it was used last (not in use for more than 5 min.)	–
	Cleaning parts with a cleaning solution	daily	24 picture 4
Base machine (parts for capsule preparation) 	Remove all parts and clean with hot water	daily	26
	Cleaning machine with a cleaning capsule	every 2 weeks (every day when using capsules containing milk)	27 - 28
	Cleaning machine with a cleaning solution	monthly	29 - 30

Cleaning overview



For descaling see pages 31 - 32.



Caution!

To prevent damage to the appliance do not use alkaline cleaning agents when cleaning, use a soft cloth and a mild detergent.

Rinsing the milk foaming unit



For quick cleaning and to prevent milk residue drying in the milk foaming unit rinse it with water after every use.



Risk of scalding!

Very hot steam and hot water.



Risk of clogging!

If the milk foaming unit is not used within 5 minutes following the last use it has to be cleaned thoroughly. To do that the milk foaming unit has to be taken apart and the parts cleaned so that no milk residue remains and dries on.



1 Place a container under the milk foaming unit.

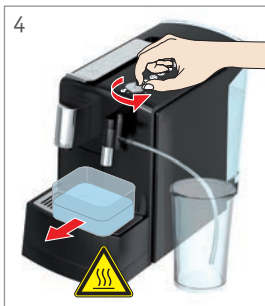


2 Immerse the suction hose in a container with cold water.



Optional: fill cold water into cleaned milk container.

3 Turn the rotary switch to milk frothing. The rinsing process starts.



4 Turn the rotary switch back to drink dispensing. Empty the container.

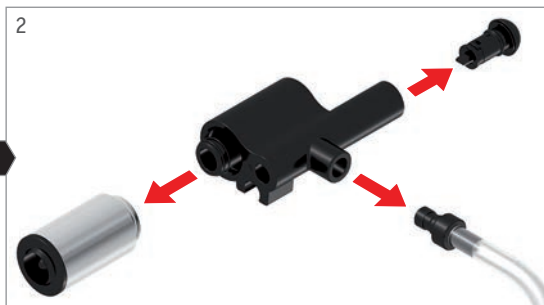


WARNING

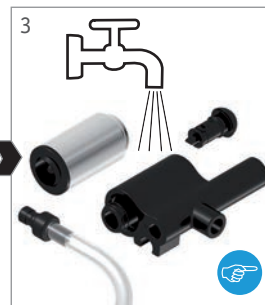
The milk foaming unit must be cleaned regularly to ensure that it functions properly. For this purpose please take note of the cleaning recommendations in these operating instruction (p. 22 - 25). Please be aware that the milk foaming unit contains parts which are subject to deterioration dependent on usage and cleaning patterns (air intake nozzle and milk suction hose). Failure to use cleaned or correctly functioning parts can result in the milk frother not operating at an optimal level. Should you need replacement parts please contact K-fee Customer Service (p. 37).



1
Allow the milk foaming unit to cool down and then remove it from the steam outlet.



2
Take the milk foaming unit apart as illustrated.



3
Thoroughly rinse the parts with hot water and allow to dry individually before assembling them.

Cleaning the milk foaming unit following its last use



We recommend cleaning the milk foaming unit after every use before it becomes difficult to remove the milk residues. First place the parts into hot water in order to soften the milk residues.



4
Assemble the milk foaming unit and push it on to the steam outlet.



If the milk foaming unit is not used within 5 minutes following the last use it has to be cleaned thoroughly. To do that the milk foaming unit has to be taken apart and the parts cleaned so that no milk residue remains and dries on.



WARNING

The milk foaming unit must be cleaned regularly to ensure that it functions properly. For this purpose please take note of the cleaning recommendations in these operating instructions (p. 22 - 25). Please be aware that the milk foaming unit contains parts which are subject to deterioration dependent on usage and cleaning patterns (air intake nozzle and milk suction hose). Failure to use cleaned or correctly functioning parts can result in the milk frother not operating at an optimal level. Should you need replacement parts please contact our K-free Customer Service (p. 37).



Reassemble the milk foaming unit again carefully following each disassembly and attach it to the steam outlet. All parts of the milk foaming unit have to be firmly put together again so that it functions properly.

Cleaning the milk foaming unit daily



Health risk!

Carefully read the user instructions for the cleaning liquid and follow the safety instructions.



First carry out the cleaning as described in the chapter "Cleaning the milk foaming unit following its last use" (p. 23).




Risk of scalding!

Very hot steam and hot cleaning liquid.



Health risk!

Do not drink any cleaning liquid.

1  Only use detergents that are suitable for the K-free System. For further information please email: Kfee@k-free-system.com.au
For hygiene reasons, the milk foaming unit should be rinsed with cleaning liquid every day.



Fill about 20 ml of the cleaning liquid and 80 ml of cold water into a second container.

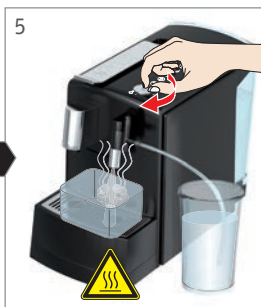
Optional: fill about 20 ml of cleaning liquid and 80 ml of cold water into the cleaned milk container.



Immerse the suction hose in container with cleaning liquid.



Place a container under the milk foaming unit.



Turn the rotary switch to "milk frothing". Wait to the end of the rinsing process.



Turn the rotary switch back to drink dispensing. Empty the container.



Thoroughly clean the second container and fill with approx. 250 ml of cold water.



Place the empty container back under the milk foaming unit.



Immerse the suction hose in the container with water.

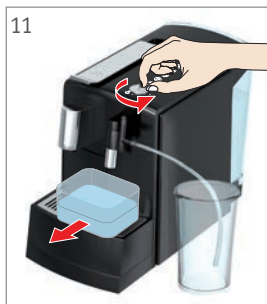


Turn the rotary switch to "milk frothing". Wait to the end of the rinsing process.

Cleaning the milk foaming unit daily (continued)



Risk of scalding!
Very hot steam and hot water.



Turn the rotary switch back to drink dispensing. Empty the container.



Wipe down the milk foaming unit and front of the machine with a cloth.



WARNING

The milk foaming unit needs to be cleaned regularly in order to ensure its proper function. For this purpose please take note of the cleaning recommendations in these operating instructions (p. 22 - 25). Please remember that the milk foaming unit contains parts which are subject to deterioration dependent on usage and cleaning patterns (air intake nozzle and milk suction hose). Failure to use cleaned or correctly functioning parts can result in the milk frother not operating at an optimal level. Should you need replacement parts please contact K-free Customer Service (p. 37).

Cleaning the machine daily



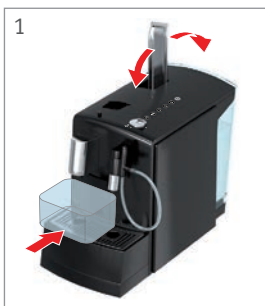
For hygiene reasons and in order to achieve top beverage quality we recommend rinsing the machine before and after each drink dispensing.



Risk of scalding!
Very hot water.



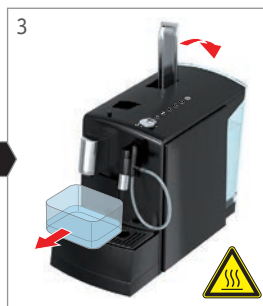
Risk of damage!
Only use a damp cloth and a mild cleaning agent (no scouring or solvent based cleaning products). Do not wash machine parts in the dishwasher.



Place a container under the spout.
Open lever and close again.



Press the rinse button - rinsing starts.



When rinsing has finished, open the lever and empty the container.



Switch off appliance.



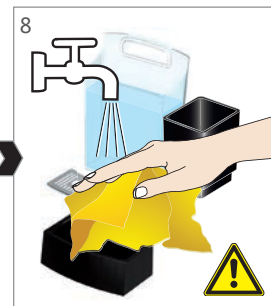
Remove both drip trays, spent capsule container and water tank.



Turn the coffee spout and take off.



Take drip trays apart. Empty all the containers.



Clean and reassemble all parts. Clean the coffee spout especially under hot water.



1 Only use cleaning capsules that are suitable for the K-fee® System. For further information please email: Kfee@k-fee-system.com.au



For hygiene reasons we recommend cleaning the machine with a cleaning capsule every two weeks. When using beverage capsules containing milk we recommend daily cleaning with cleaning capsules.



2 Remove and empty both drip trays.



3 Put the drip trays back into place. Remove and empty the water tank.

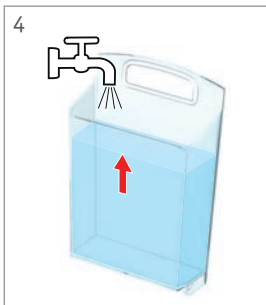
Optional: Cleaning the machine with a cleaning capsule (recommended)



Danger to health: Carefully read the user instructions for the cleaning capsule and follow the safety instructions.



Risk of scalding! Very hot water. Carefully empty the drip tray and spent capsule container.



4 Fill the water tank with 1 l of fresh, cold water.



5 Re-insert water tank.



6 Place a container under the spout.



7 Open the lever and insert a cleaning capsule.

Optional: Cleaning the machine with a cleaning capsule (continued)



Risk of scalding!
Very hot water.



During cleaning step 8 please remember the programmed quantity for filling the small cup.



The blue liquid might change its colour to green during cleaning.



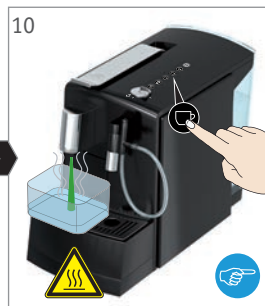
Danger to health:
Do not drink any cleaning liquid.



Close the lever and press the "small cup" button. Let approx. 40 to 60 ml of cleaning liquid run into the container.



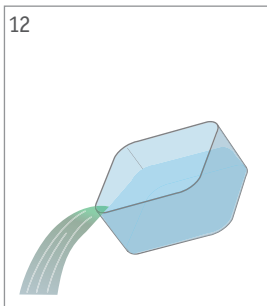
Let the cleaning liquid take effect for 2 minutes.



Press the "large cup" button (100 - 200 ml). The rinsing process starts.



Open and close the lever. The cleaning capsule drops into the spent capsules container.



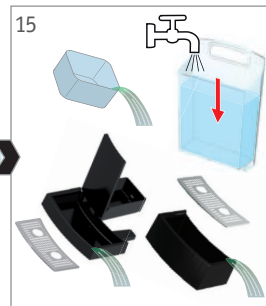
Empty the container.



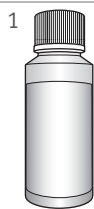
Press the "large cup" button (100 - 200 ml). The rinsing process starts. Please repeat the rinsing process until the water is clear.



Open the lever. Remove the container, drip trays and water tank.



Empty the container and drip trays. Fill water tank with fresh water.



1

Only use cleaning liquids that are suitable for the K-free® System.
For further information please email:
Kfee@k-free-system.com.au

For hygiene reasons we recommend rinsing the machine with cleaning liquid once a month.



2

Open lever and close again.



3

Remove water tank.
Remove water filter (optional).



Cleaning the machine with cleaning liquid (alternatively)



Danger to health:

Carefully read the operating instructions for the cleaning liquid and follow the safety instructions.



Caution!

Remove the water filter before cleaning.



Risk of scalding!

Carefully empty the drip tray and spent capsule container.



4

Remove both drip trays with spent capsule container.



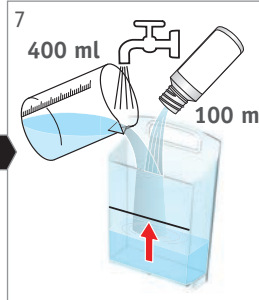
5

Take drip trays apart.
Empty all the containers.



6

Re-insert the lower drip tray with spent capsule container.



7

Fill the water tank with 100 ml of cleaning liquid and 400 ml of cold water.

Cleaning the machine with cleaning liquid (continued)



Risk of scalding!
Very hot cleaning liquid.



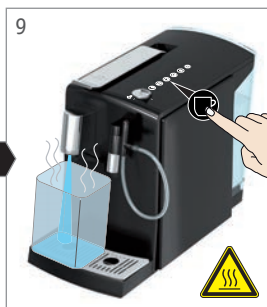
Danger to health:
Do not drink any cleaning liquid.



Risk of scalding!
Very hot water.



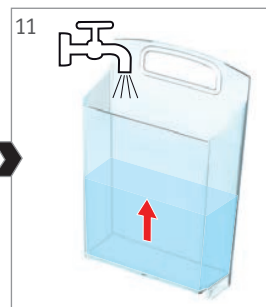
Insert water tank.
Place a suitable container (min. 1 l) under the spout.



Press the "extra large cup" button repeatedly until the water tank is empty.



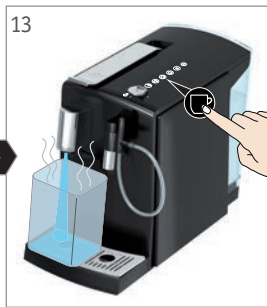
Empty the container.
Take out the water tank and empty it.



Thoroughly rinse and clean the water tank.
Fill the water tank with 500 ml of fresh, cold water.



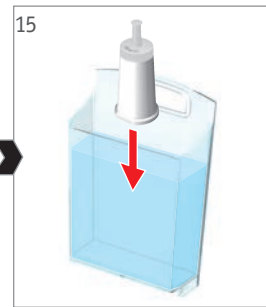
Insert water tank.
Place a container under the beverage spout.




Press the "extra large cup" button repeatedly until the water tank is empty.




Empty the container.
Remove water tank.



Re-insert the water filter (optional).
Refill the water tank with fresh, cold water and insert water tank into machine.

1  Only use descaling agents that are suitable for the K-fee® System. For further information, please email: Kfee@k-fee-system.com.au. Even when a water filter is used, the machine has to be descaled in order to ensure optimal function.



Descaling becomes necessary when the rinse switch starts flashing red while beverages are dispensed. The appearance of the signal depends on the water hardness selected (p. 17).

2  **Off**
3 s min.

Switch off appliance.

3  

Press the milk and rinse buttons together for at least 6 seconds.

Descaling the machine



Danger to health:

Carefully read the user instructions for descaling and comply with the safety instructions.

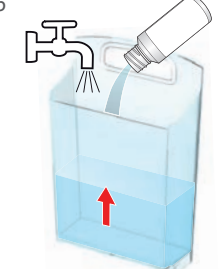


Caution!

Remove the water filter before descaling.

4  

Remove water tank. Remove water filter (optional).

5 

Fill water tank with descaling agent (100 ml) and 0.4 l water.

6 

Insert water tank. Place a suitable container (min. 0.6 l) under the beverage spout and milk foaming unit.

7  

Turn the rotary switch to milk froth. Descaling process starts. The rinsing process continues automatically (see figure 8).



If the descaling process is interrupted, the appliance returns to the descaling mode automatically when switched on again. In such a case, the milk and rinse buttons blink alternately and descaling can be resumed by pressing the rinse button.



Risk of scalding!

Very hot liquid.

Descaling the machine (continued)



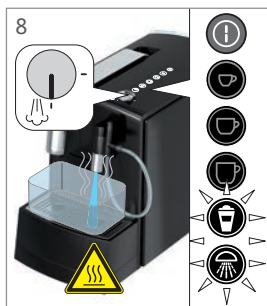
Risk of scalding!
Very hot liquid.



Danger to health:
Do not drink the descaling liquid.



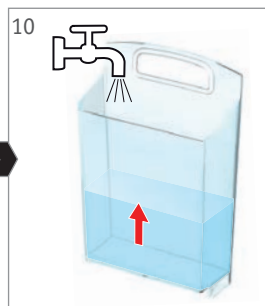
Risk of scalding!
Very hot water.



Rinsing of beverage spout and frother continues in turns (2 minutes break).



Wait until the water tank is empty and the milk and rinse buttons light up. Empty the container.



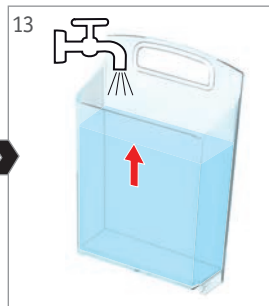
Take out the water tank and rinse thoroughly. Fill the water tank with 0.5 l of fresh, cold water.



Insert water tank. Place a container under the beverage spout and milk foaming unit. Press the rinse button.



The rinsing process starts. Wait until the water tank is empty and the milk and rinse buttons light up.



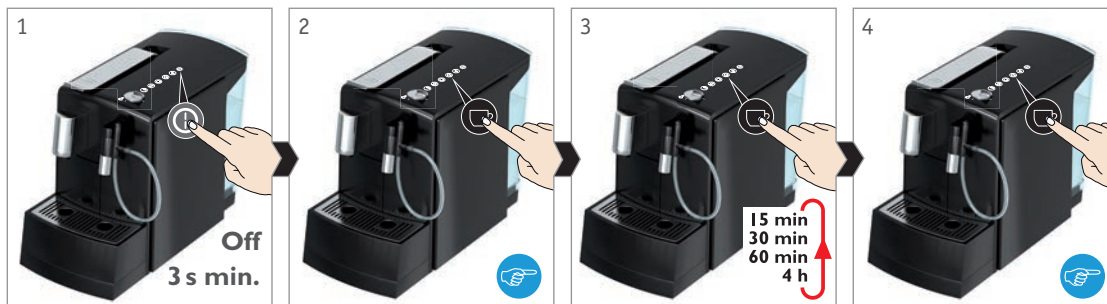
Take out the water tank and fill with fresh, cold water.



Insert water tank. Turn the rotary switch to drink dispensing.



Press the rinse button. The machine will switch off automatically. Empty the container and drip trays.



Switch off appliance.

Press the "large cup" button for at least 3 seconds. The current setting is displayed.

Press the "large cup" button repeatedly to call up the required setting (see table).

Press the "large cup" button for at least 3 seconds to save the setting.

Setting the automatic switch-off mechanism



To cancel the setting press the On/Off button.



The "small cup", "large cup" and milk button flash once as confirmation.

Switching off period approx.	15 min	30 min	60 min	4 h
Button(s) lighting up		 	 	



Environmental protection

The appliance returns to Standby/Eco mode if it is unused for more than 15 minutes (factory setting). For the sake of the environment, we recommend keeping the factory setting. The appliance uses considerably less energy in Standby/Eco mode (less than 0.5 W) than if it is ready for operation.

Evaporating remaining water



With this function, any remaining water in the machine is evaporated and removed. This is advisable for hygiene reasons and is a safeguard against damage to the machine:

- During prolonged absence (e.g. holidays) germs could grow in any residual water.
- Residual water can freeze in the machine when this is transported or stored at temperatures below freezing.



Risk of scalding!

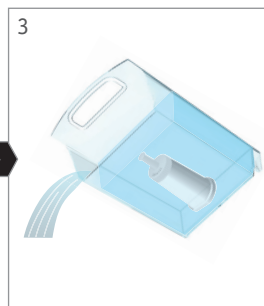
The steam temperature can reach up to 120 °C. Do not reach under the spout or frother. Keep an adequate distance to the spout and frother. Be careful when handling a hot container.



Allow appliance to warm up to room temperature if necessary.



Open lever and close again. Switch off appliance.



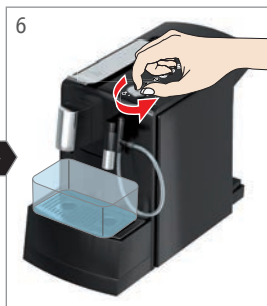
Remove and empty water tank.



Keep the small cup and large cup buttons depressed and then press the On/Off button.



Place the container under the spout and frother. Turn the rotary switch to milk froth. Evaporation starts.



Wait until evaporation is finished and the machine switches off. Turn the rotary switch to drink dispensing.



Remove and empty the container. Re-insert the empty water tank.



Use a cloth to dry the front of the machine.

Rinse button flashing red?
Wrong position of rotary switch. When switching the machine on, the rotary switch must be in the "drink dispensing" position.
Quick flashing of rinse button and another button?
Switch off and disconnect appliance from mains, allow to cool down. Then reconnect and switch on appliance again. Contact service centre if error reoccurs.
Rinse button flashes red while dispensing drink?
Descale the machine.
Drink not dispensed properly?
Press the lever down completely. If necessary, clean and descale the machine. In case that the water tank ran empty during beverage dispensing, please open and close the lever, in order to eject the capsule. Fill the water tank and rinse system until water comes out of the spout.
Drink dispensing is delayed?
Appliance is re-heating.
Is the spent capsule container overfull and jammed?
Try to disengage the spent capsule container by gently shaking it.
After inserting a capsule, the lever cannot be closed completely?
Check that there is no used capsule in the brewing chamber, that the container for used capsules is not overfull and that the newly inserted capsule is in the correct position.
Is the beverage not hot enough?
If necessary, descale the machine.

Frequently asked questions



The appliance will only function optimally with K-fee® System branded capsules. The use of non-original capsules can involve the following risks: risk to health, damage to the machine and the possible loss of warranty rights.

Frequently asked questions (continued)

Milk foaming unit does not function?

No milk froth can be dispensed while drink is dispensed. If necessary, clean milk foaming unit thoroughly.

Unsatisfactory milk frothing result?

The froth quality can vary depending on the type of milk and milk temperature. Residual cleaning liquids can have a negative effect on froth quality. Thoroughly rinse the milk foaming unit with water.

Milk foaming unit stops suddenly and rinse button flashes red?

Milk frothing cannot last longer than 90 seconds. After that the rotary switch must be returned to drink dispensing.

Do I have to descale the machine if I am using the water filter?

The machine must be descaled on a regular basis. However, the water filter significantly extends the time until the machine has to be descaled again. Nevertheless, it is possible that mineral deposits occur depending on the water quality and the machine location. For this reason we recommend an annual cleaning/rinsing process using a K-fee® System descaler.

What is Standby/Eco mode?

The machine returns to Standby/Eco mode when it is not used within a set time period. The appliance uses considerably less energy in Standby/Eco mode (less than 0.5W) than if it is ready for operation. Overnight it is recommended that the machine be unplugged from the power mains.

Reset appliance to factory settings?

Switch off the machine and unplug the mains cord from the wall socket. Wait for at least 30 seconds. Keep the On/Off button and rinse button depressed at the same time and re-insert the mains plug. Let go of both buttons. All back-lit buttons flash once as confirmation.

	220 - 240 V, ~ 50/60 Hz, max. 1455 W
	1 m
P	max. 19 bar
	approx. 1.2 l
	approx. 5.5 kg
	A = 189 mm B = 385 mm C = 293 mm (approx. 390 mm with lever open)
	 max. 150 mm
	15°C - 32°C
	approx. 93°C

If you have any queries or suggestions, please contact us:

☎ **1800 469 373**

(Free of charge on land lines; for information on mobile phone surcharges, please contact your mobile phone provider.)

✉ **kfee@k-fee-system.com.au**

🌐 **www.k-fee-system.com.au**

We advise to keep the original packaging in order to ship the machine to a service center for repair if necessary.


Any damage caused by transport without adequate packaging will not be covered by the warranty.

Specifications and
service contact

The packaging is recyclable. Ask the department responsible in your local council offices for further information about recycling.

Environmental protection has priority!



The machine is made of valuable materials that are recyclable. For this reason,  only dispose of the machine at a public recycling yard in your vicinity.

For this reason, contact your local waste management recycling centre for correct disposal.

Notes on disposal



EXPRESSI®



Warranty Details

K-free System capsule machine

The product is guaranteed to be free from defects in workmanship and parts for a period of 24 months from date of purchase. Defects that occur within this warranty period, under normal use and care, will be repaired, replaced or refunded at our discretion, solely at our option with no charge for parts and labour.

The benefits conferred by this warranty are in addition to all rights and remedies in respect of the product that the consumer has under the Trade Practices Act and similar state and territory laws.

Our goods come with guarantees that cannot be excluded under the Australian Consumer Law. You are entitled to a replacement or refund for a major failure and for compensation for any other reasonably foreseeable loss or damage. You are also entitled to have the goods repaired or replaced if the goods fail to be of acceptable quality and the failure does not amount to a major failure.

AFTER SALES SUPPORT

  1800 469 373

(Free of charge on land lines; for info on mobile phone surcharges, contact your mobile phone provider)

 www.k-free-system.com.au

2

YEAR WARRANTY



Kruger ANZ
Suite 7
400 Canterbury Road
Surry Hills, VIC 3127
Australia.



www.k-fee-system.com.au