



# EXPRESSI®

multi - beverage  
capsule machine

MANUAL





## Contents

Safety instructions .....	4 – 7
Machines – Overview .....	8 - 9
Start-up .....	10
Optional: Inserting water filter.....	11
Optional: Activating/deactivating the water filter .....	12
Preparing drinks .....	13
Programming cup capacity.....	14
Setting the automatic switch-off mechanism.....	15
Daily cleaning of machine .....	16
Optional: Cleaning the machine with a cleaning capsule (recommended) .....	17 – 18
Cleaning the machine with cleansing liquid (alternative) .....	19 – 20
Descaling the machine.....	21 - 22
Evaporating residual water .....	23
Frequently asked questions.....	24 - 25
Specifications and servicing.....	26
Disposal instructions .....	27

### Symbols and warnings



The warning triangle is used in the instructions where risks can result to the user or the machine if the safety instructions are not followed.



Warning: Electric shock



Warning: Danger of scalding



Prohibited: Do not reach into machine.



Prohibited: Do not drink.



Instruction: Read instructions



Recommendation



Recommended action

**If you fail to comply with these operating instructions and safety instructions, the machine may become dangerous to operate. Please keep the operating instructions and include them with the machine if it is passed on to third parties.**

Do not start the machine if it is damaged or if it does not work properly. In that case, immediately remove the plug from the power socket and contact the Service Hotline.

The machine is designed and manufactured for domestic use. The manufacturer assumes no liability for consequences arising from commercial use, use not in compliance with its intended purpose or non-compliance with the operating instructions. This machine is intended to make hot drinks as stipulated in the operating instructions.



This machine is intended for use in households and similar areas, such as staff rooms in offices and shops, as well as other work-related facilities; also on farms, for use by guests in hotels, motels and bed & breakfast establishments. The machine may only be used for its intended purpose.

In case of long periods of absence, vacation etc., the machine must be emptied, cleaned and the power plug must be removed from the socket.

If there is risk of frost, all residual water must be removed, see the section on "Evaporating residual water" on page 23. The mains voltage must match the specifications on the type plate. Only connect the machine to a grounded 3-pin wall socket. If you connect the machine incorrectly, you may lose your warranty rights.

Do not damage the power cord by placing it on or near hot objects or over sharp edges. Do not allow the power

cord to hang down (risk of tripping). Do not touch the power cord with wet hands. Do not remove the plug from the socket by pulling on the cable. If the power cord shows signs of damage, do not start the machine.

If the power cord of the machine is damaged, it must be replaced by the manufacturer, his company customer service or a similarly qualified person in order to avoid any hazards.

Do not place the machine on a hot surface (e.g. cooker) or operate it next to heat sources or fires. Do not allow the machine to stand on its power cord. Always place the unit on a stable, level surface that is water-resistant.

For health reasons, only fill the water tank with fresh drinking water.

**How to avoid injuries and scalds when using the machine.**

Do not leave the machine unattended while a drink is being prepared.

Safety instructions  
(continued)

## Safety instructions (continued)

This machine may be used by children from the age of 8 years and older and by persons with reduced physical, sensory or mental abilities or who lack experience and knowledge in handling the machine, provided they are supervised or have been instructed regarding the safe operation of the machine, and understand the resulting dangers.

Cleaning or servicing the machine normally carried out by the user may not be carried out by children unless they are 8 years old or older and are acting under supervision.

The machine and its power cord must be kept out of the reach of children younger than 8 years. Do not allow children to play with the machine.

Never open the lever on the machine during the brewing, rinsing, cleaning or descaling processes. Do not place your fingers under the dispensing spout after completing a process and when opening the lever. Any residual liquid dripping

may scald you. When the brewing process is finished, slowly open the lever to eject the capsule; do not bend over the capsule insertion opening (risk of hot liquid spraying).

Never reach with your fingers into the capsule insertion opening - risk of injury. Do not use the machine without its drip tray or drip grating. Do not overfill the water tank. Never lift the machine by its lever.

Store the machine and all its accessories outside the reach of children.

Never open the machine or insert objects into the machine openings.

To avoid any hazards, any work beyond the normal use of the machine, its cleaning, descaling and maintenance, such as repairs or replacing the power cord may only be carried out by a customer service authorised by the manufacturer.

Before cleaning the exterior of the machine, unplug the power cord and allow the machine to cool down.

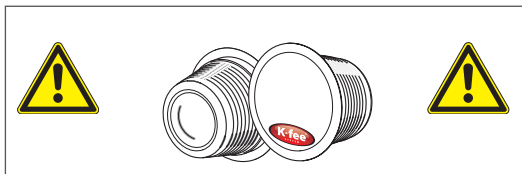
Do not clean the machine, power cord or power plug with water or immerse them in liquid. Do not clean the machine under flowing water. Never put the machine or its parts into a dishwasher.

Refer to the instructions on how to use all cleaning and descaling agents before use and comply with the safety regulations.

To prevent damage to the appliance do not use alkaline cleaning agents when cleaning, use a soft cloth and a mild detergent.

Never use a damaged or deformed capsule. Only use drink capsules marked with the K-fee® system logo and that are intended for the machine.

### **Capsules to be used:**



**Only use genuine K-fee® system capsules. Note the red K-fee® system logo and the characteristic slotted capsule shape.**

Using non-genuine capsules involves the following risks:

#### **1. Health hazards**

If you use non-genuine capsules, differences in brewing process and capsule design, it may cause hot water to escape under high pressure - risk of scalding

#### **2. Damage to the machine and warranty**

If you use non-genuine capsules, differences in brewing process and capsule design, it will cause damage to the machine, which means that any warranty claims may be forfeited.

**The manufacturer and his distribution partner cannot be held liable for any injury or damage which is the direct or indirect result of using non-genuine capsules in this machine.**

Safety instructions  
(continued)

## Machines – Overview

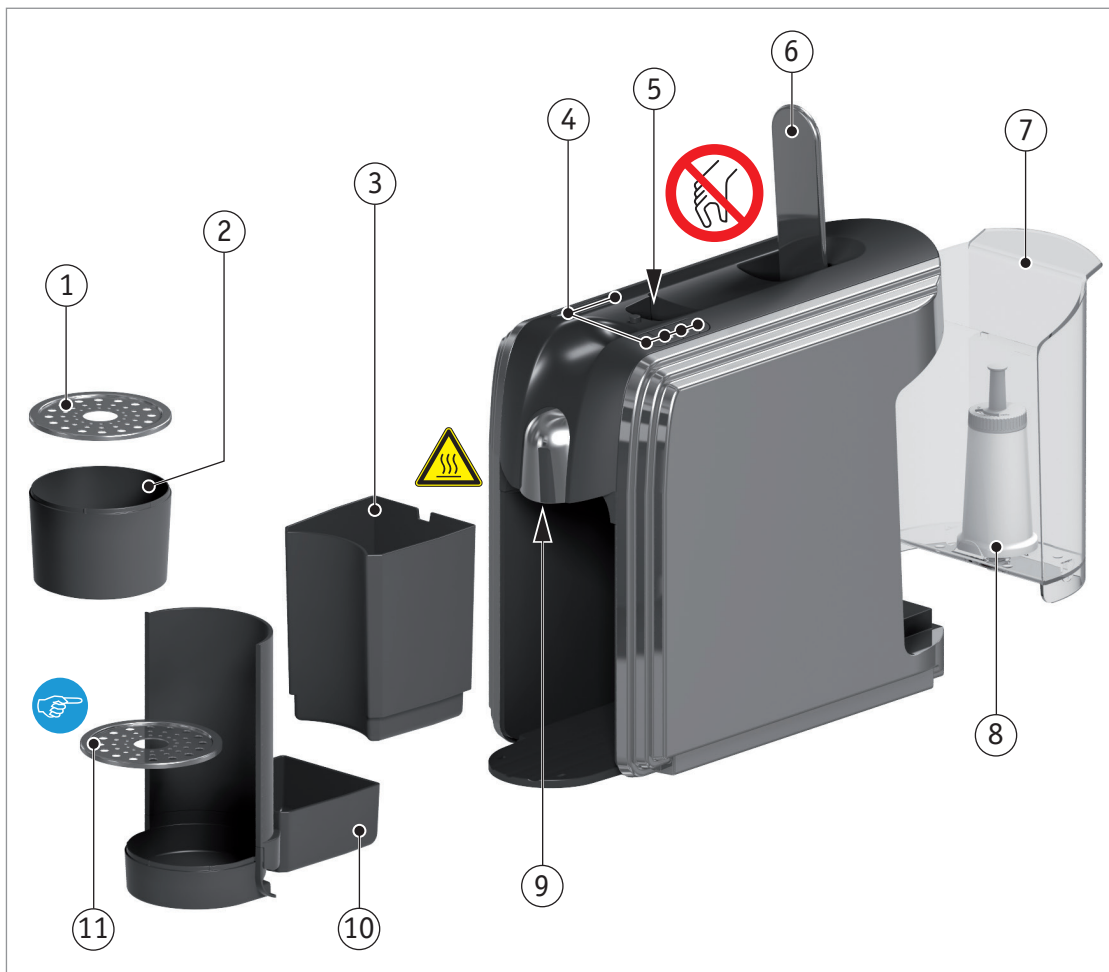
- 1 Upper drip grating
- 2 Upper drip tray
- 3 Spent capsule container
- 4 Controls
- 5 Capsule insertion opening
- 6 Lever
- 7 Water tank
- 8 Water filter (optional)
- 9 Drink spout
- 10 Lower drip tray
- 11 Lower drip grating



**Risk of injury** Four pointed needles open the capsule in the machine. To avoid injury do not reach into the capsule insertion opening.



Before using the machine for the first time, remove the protective foils from both drip gratings (1, 11).



## Button symbols



On/off button

Small cup

Large cup

Extra large cup

Milk button

Rinse button



### Risk of scalding

The machine produces very hot water (when brewing, descaling, cleaning and rinsing). In order to prevent scalding and other injuries always ensure that the lever is fully closed when the machine is running. Do not reach under the spout and do not remove the drip tray.



### Items delivered

The delivered package includes the parts shown in the illustration and these original operating instructions. Before starting up the machine, please check that you have received all parts. Optional content: 1 water filter and 2 cleaning capsules

## Light signals



All drinks buttons light up white and the rinse button lights up blue: ready to operate; press buttons now.



All drinks buttons light up white: please wait. Machine is heating up.

One of the drinks buttons flashes white: the machine is dispensing a drink.



Rinse button flashes blue: rinse process.



Rinse button flashes red while dispensing drink: please descale machine.

Rinse button flashes red continuously: fault.

## Machines - Overview (continued)

## Start-up



Read the safety instructions before starting up the machine (p 4 - 7).



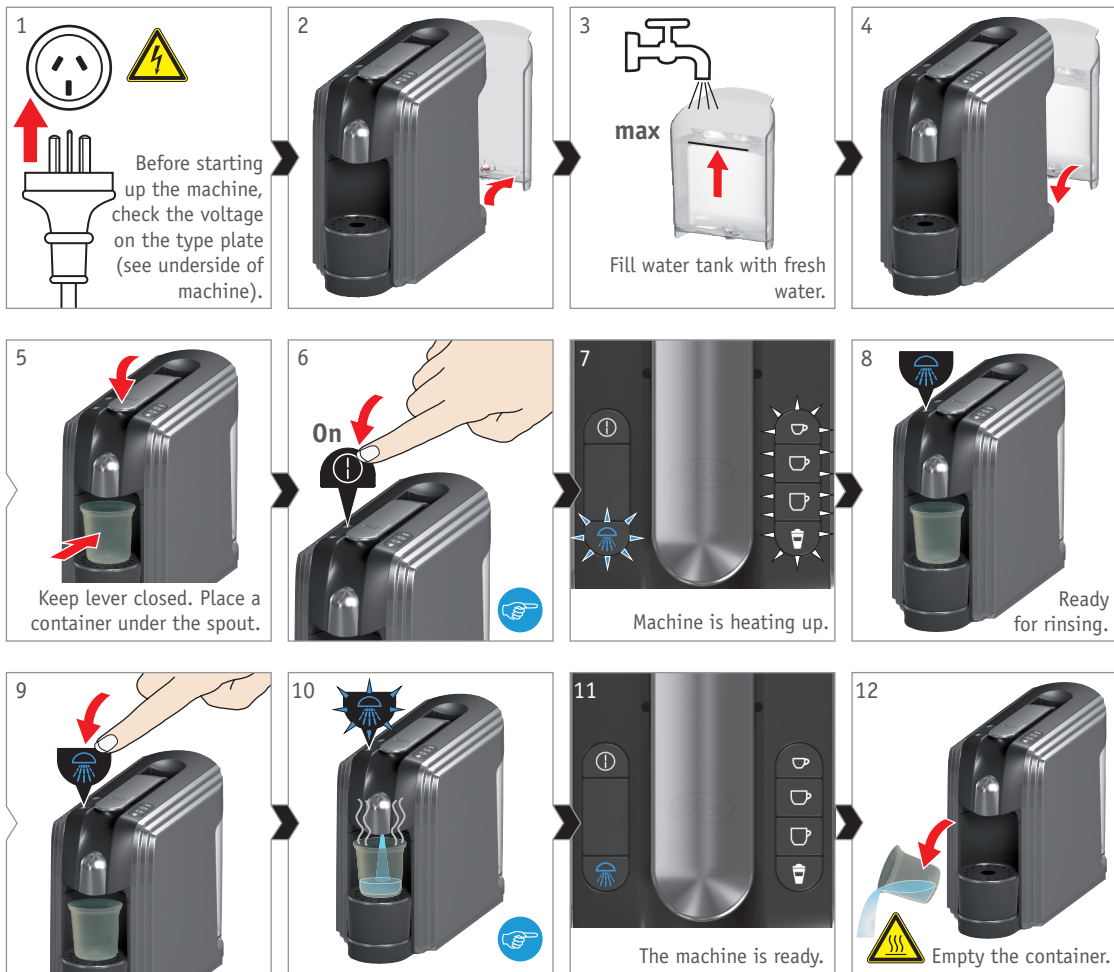
If the machine was exposed to temperatures below freezing, please wait at least 3 hours before switching it on so that it can warm up to room temperature. If the machine is frozen or very cold, the machine may not function properly.



Before using the machine for the first time, run 4 rinsing cycles. To do that, press the rinse button after the previous rinsing process has ended. If you use a water filter, please read the instructions on page 11.



**Risk of scalding**  
Very hot water.





This optional water filter protects the machine against lime scale formation, it removes odorous and unwanted taste substances (chlorine etc.) and optimises the quality of the drink. Only use water filters that are suitable for the K-fee® system. For further information, please email: [Kfee@k-fee-system.com.au](mailto:Kfee@k-fee-system.com.au)



Eject existing capsule.



Place container under spout.

## Optional: Inserting water filter



### Safety instruction

Please read the water filter operating and safety instructions carefully. For reasons of hygiene we advise you to replace the water filter at least every 3 months.



Rinse



Empty water tank.



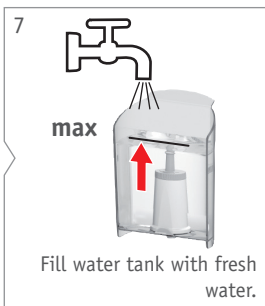
Set date.



Insert new water filter and push down firmly.



Use rotary scale to set month for next filter change.



Fill water tank with fresh water.



Rinse water filter two times.



Empty the container.



The machine is deactivated by default for the water filter. See page 12 to check or change this setting.



### Risk of scalding

Very hot water.

Optional: Activating / de-activating the water filter

1

Off  
min. 3 s

2

Press milk button together with on/off button.

3

Current setting is displayed (see table).

4

Press milk button repeatedly until the setting you want is displayed.

5

min. 3 s

Save setting.

6

Buttons flash once as confirmation.

Water filter	deactivated (factory setting)	activated
Illuminating button(s)		



After fitting a water filter, check whether the water filter setting is also activated. Only when the setting is activated is the period until the next descaling extended by a considerable margin. To query or change the setting, hold down the milk button together with the on/off button.

The illuminated controls then indicate the current setting (see table). To change the setting, press the milk button briefly. To save the setting, hold down the milk button for at least 3 seconds. The new setting remains saved even after a power failure.



To cancel the setting press the on/off button.





The machine is ready.



## 2 Select size of cup

max.  
90 mm



Place cup under spout.



If required, adjust the cup support.

max.  
150 mm



Place glass under spout.

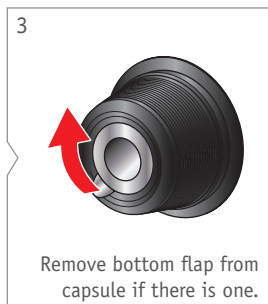
## Preparing drinks (e.g. espresso)



The machine switches off automatically if it is not used within a preselected time period (p 15). If necessary, press the on/off button to reactivate the machine before brewing new drinks and rinse (p 10). Important: Only insert the capsule after rinsing has finished.



Press any button again to stop the brewing process.



Remove bottom flap from capsule if there is one.



Open the lever and insert capsule.



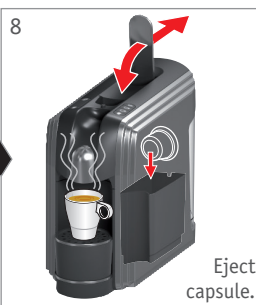
Close lever completely and press required button.



Machine brews drink.



The drink is ready.








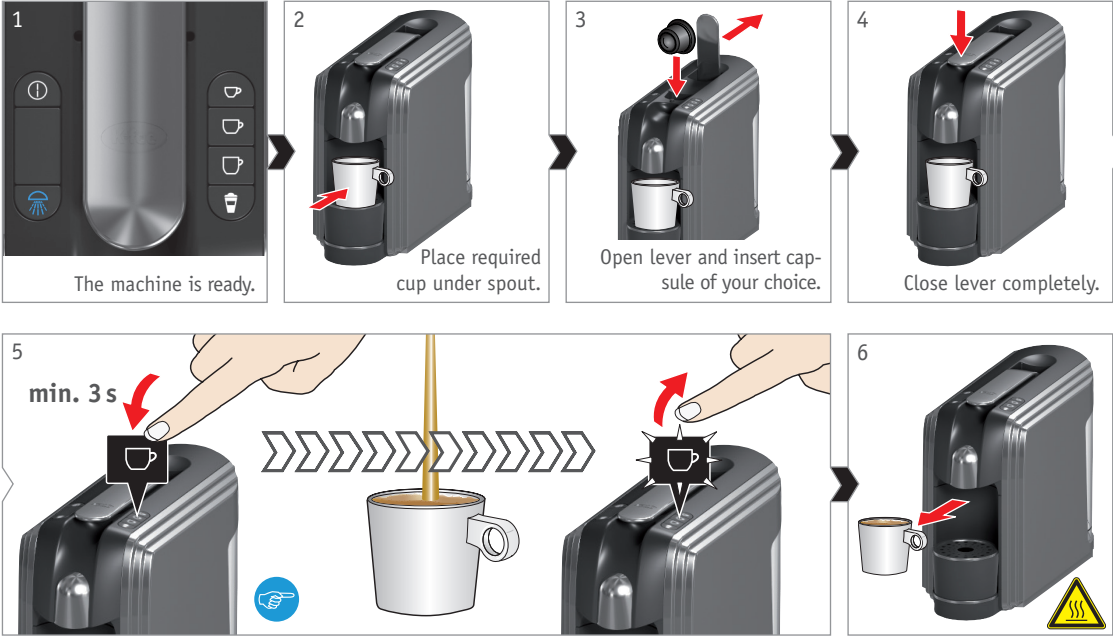
Eject capsule.



**Risk of scalding**  
Very hot drink.

# Programming cup capacity

Button	Factory setting [ml]	Setting range [ml]
	45	30 – 100
	105	80 – 200
	200	100 – 240
	65	65 – 130
	45	–



**Risk of scalding**  
Very hot drink.

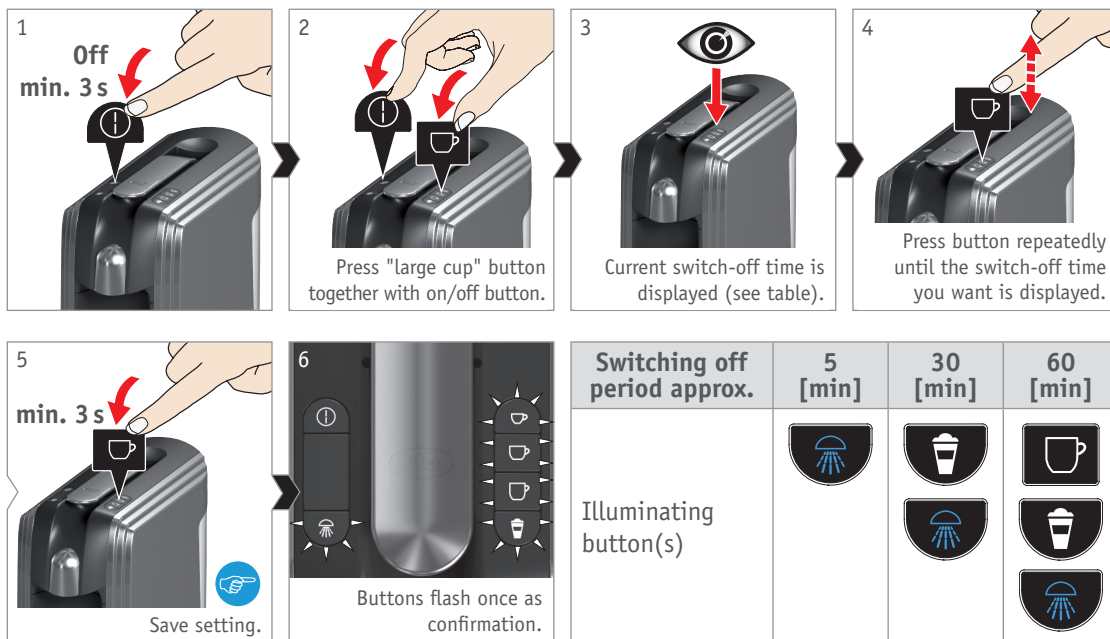


Before programming, always insert a new capsule in the machine.

Hold down the required button (e.g. "large cup") depressed for at least 3 seconds to start the programming process. Keep the button depressed until the required fill quantity is reached.

The new fill quantity remains stored (even after a power failure).

It is also possible to reset the cup capacity to the factory settings. To do this, read the frequently asked questions on page 25.



## Setting the automatic switch-off mechanism



To cancel the setting, press the on/off button.



## Environmental protection

The appliance returns to Standby/Eco mode if it is unused for more than 5 minutes (factory setting). For the sake of the environment, we recommend you keep the factory setting. The machine uses considerably less energy in Standby/Eco mode (less than 0.5 W) than when it is ready for operation.



To query or change the setting, hold down the "large cup" button together with the on/off button.

The illuminated controls then indicate the current switch-off time (see table).

To change the setting, press the "large cup" button briefly.

To save the setting, hold down the "large cup" button for at least 3 seconds.

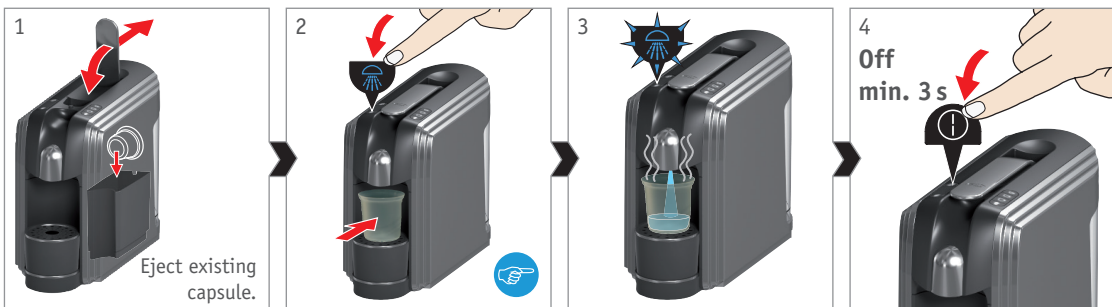
The new switch-off time remains stored even after a power failure.

It is also possible to reset the automatic switch-off time to the factory setting of 5 minutes. To do this, read the frequently asked questions on page 25.

## Daily cleaning of machine



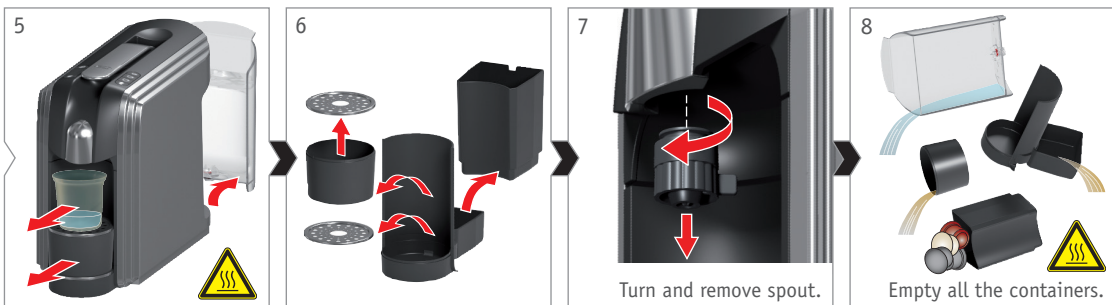
For hygiene reasons and in order to achieve top drink quality we recommend you rinse the machine before and after each drink is dispensed.



**Risk of scalding**  
Very hot water.



**Risk of scalding**  
Carefully empty drip tray and spent capsule container.



Clean and reassemble all parts. Clean spout (Fig. 7) especially under hot water.



### **Danger to health:**

If the machine is not used for longer periods without prior rinsing or cleaning, deposits may form and they are difficult to remove.



### **Risk of damage**

To clean, only use a moist cloth and, if required, a mild cleansing liquid (do not use any abrasive, aggressive or alkaline cleaners). Do not wash machine parts in the dishwasher.



Only use cleaning capsules that are suitable for the K-fee® system. For further information, please email: [Kfee@k-fee-system.com.au](mailto:Kfee@k-fee-system.com.au)



For hygiene reasons we recommend you clean the machine with a cleaning capsule every two weeks. When using drinks capsules containing milk we recommend daily cleaning with cleaning capsules.

## Optional: Cleaning the machine with a cleaning capsule (recommended)



### Danger to health

Read the operating instructions for the cleaning capsule carefully and follow the safety instructions.



### Risk of scalding

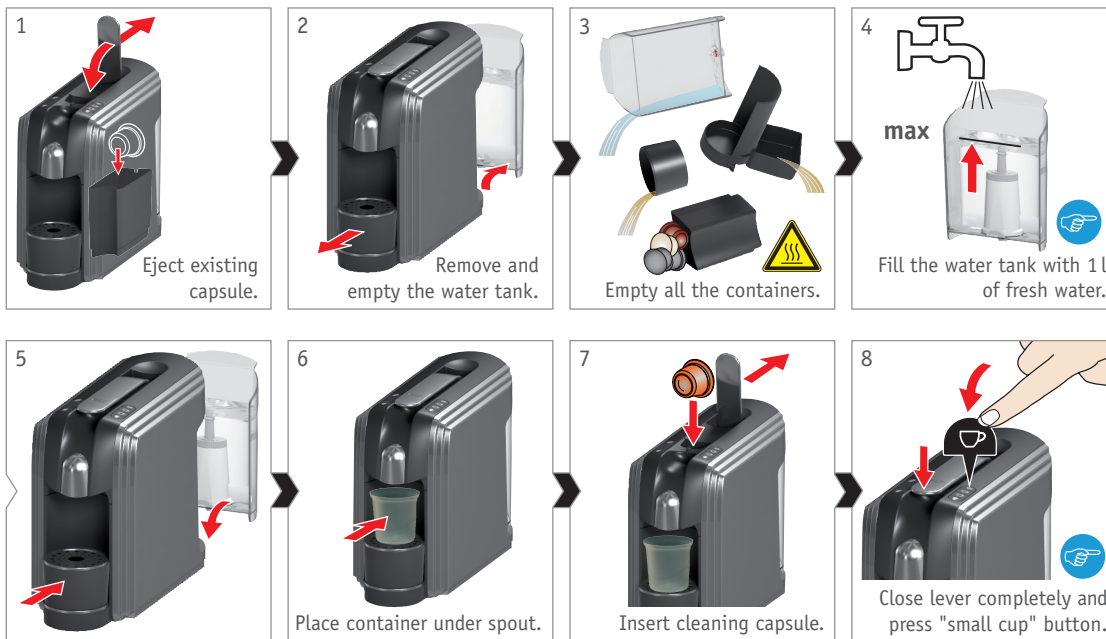
Very hot water. Carefully empty drip tray and spent capsule container.



The water filter (optional) may remain in the water tank.



Please take into account that a full cup quantity may be programmed for the small cup (p 14).



## Optional: Cleaning the machine with a cleaning capsule (continued)



**Risk of scalding**  
Hot cleansing liquid.



Please take into account that a full cup quantity may be programmed for the large cup (p 14).



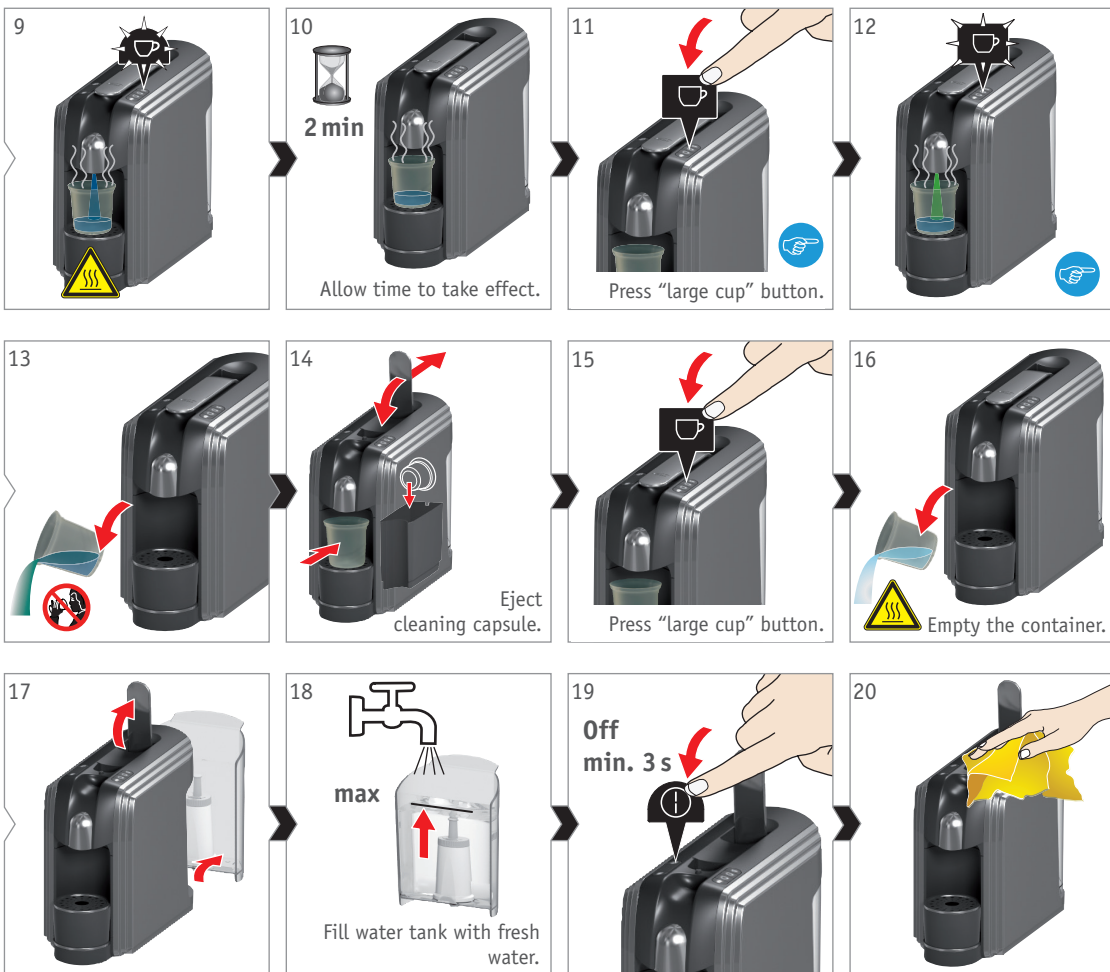
Green water indicates that the cleaning process is running.



**Danger to health**  
Do not drink any cleansing liquid.



**Risk of scalding**  
Very hot water.







Only use cleansing liquids that are suitable for the K-fee® system. For further information, please email: [Kfee@k-fee-system.com.au](mailto:Kfee@k-fee-system.com.au)



As an alternative to cleaning capsules, you can clean the machine with a cleansing liquid once a month. After using drinks capsules containing milk, it is recommended to carry out a shorter cleaning interval.

## Cleaning the machine with cleansing liquid (alternative)



### Danger to health

Read the operating instructions of the cleansing agent carefully and follow the safety instructions.



### Caution

If a water filter is fitted, remove it before cleaning.



### Risk of scalding

Carefully empty the drip tray and spent capsule container.



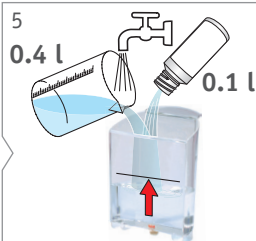
Eject existing capsule.



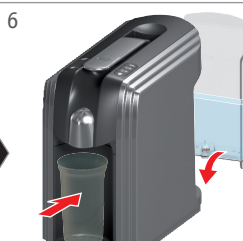
Remove and empty the water tank.



Empty all the containers.



Fill with 0.1 l cleansing liquid and 0.4 l cold water.



Place a container under the spout.



Repeat the rinsing process (Figs. 7, 8, 9) until the water tank is empty.



### Risk of scalding

Hot cleansing liquid.

## Cleaning the machine with cleansing liquid (continued)



Wait 30 seconds between rinsing cycles.



### Health risk

Do not drink any cleansing liquid.



Rinse machine until water tank is empty.



### Risk of scalding

Very hot water.







Only use descaling agents that are suitable for the K-fee® system. For further information, please email: [Kfee@k-fee-system.com.au](mailto:Kfee@k-fee-system.com.au)  
Even when a water filter is used, the machine has to be descaled in order to ensure optimum function.



Descaling becomes necessary when the rinse button starts flashing red while beverages are dispensed. When the water filter is activated, the signal flashes at longer intervals.  
If the descaling process is interrupted, the machine returns to descaling mode automatically the next time the machine is switched on.

## Descaling the machine



### Danger to health

Carefully read the operating instructions for descaling and comply with the safety instructions.



### Caution

If a water filter is fitted, remove it before descaling.



### Risk of scalding

Carefully empty the drip tray and spent capsule container.



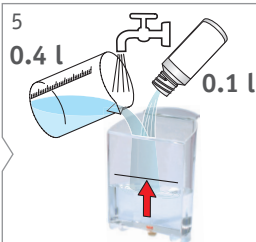
Eject existing capsule.



Remove and empty the water tank.



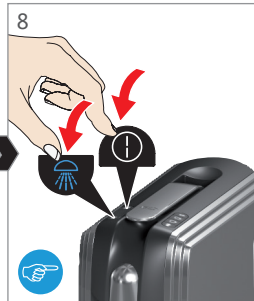
Empty all containers.



Fill with 0.1l descaling liquid and 0.4l cold water.





Place a container under the spout.





Prepare the machine for descaling (cooling-down period): Press the rinse button together with the on/off button. Let go of both buttons.


## Descaling the machine (continued)


 Repeat the rinsing process (Figs. 9, 10, 11) until the water tank is empty.


 **Risk of scalding**  
Very hot liquid.

 **Danger to health**  
Do not drink the descaling liquid.

 Reinsert the water filter (optional).

 Rinse the machine until the water tank is empty.

 **Risk of scalding**  
Very hot water.

 Ending the descaling process and resetting the descaling indicator.



With this function, any residual water in the machine is evaporated and removed. This is advisable for hygiene reasons and is a safeguard against damage to the machine:

- During prolonged absence (e.g. holidays) germs may develop in residual water.
- Residual water can freeze in the machine if it is transported or stored at temperatures below freezing.



#### CAUTION

Extreme temperatures may cause damage to the machine (permitted operating temperature 10 - 40°C). For this reason the machine

- must be protected against frost,
- may not be used at temperatures below 10°C,
- may not be used at temperatures over 40°C.

#### Procedure

- If necessary, warm up the machine until it reaches room temperature.
- Open and close the lever in order to eject any existing capsule.
- Take out and empty the water tank.
- Place container under spout.
- Ensure that the machine is switched off.



#### WARNING

Risk of scalding. The evaporation process results in hot steam (up to 120°C) and hot water.

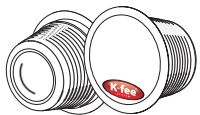
Do not reach under the spout and maintain a safe distance from the spout.

Carefully handle the hot container under the spout.

- Hold down the "small cup" and "large cup" buttons together. Now press the on/off button. Then release all buttons. Evaporation starts and the "large cup" button starts to flash.
- After the evaporation process the machine switches off automatically.
- Remove and empty the container.
- Empty and dry the drip tray and spent capsule container.
- Reinsert the empty water tank.
- Use a dry cloth to wipe the front of the housing.

## Evaporating residual water

## Frequently asked questions



The machine only works with drinks capsules of brands marked with the K-fee® System logo.

The use of non-genuine capsules may involve the following risks: risk to health, damage to the machine and the possible loss of warranty rights.

### Is the drink dispensing process delayed?

The machine readjusts the temperature for the requested drink.

### Is the spent capsule container overfull and jammed?

Try to remove the spent capsule container by joggling the container gently to and fro.

### Is the drink not hot enough?

Preheat the cup. If necessary, descale the machine – see the "Descaling the machine" section. Switch off the machine after descaling to end the cooling-down period.

### Rinse button flashes red while dispensing drink?

Please descale the machine.

### Rinse button flashes red and rapidly?

Switch the machine off and remove the plug from the mains. If the problem persists, please inform Customer Service.

### Is the drink not dispensed properly?

Push the lever fully down. If necessary, clean and descale the machine.

If the water runs out while a drink is dispensed, open the lever and close it again to eject the capsule. Fill the water tank and rinse the machine until water flows out of the drink spout.

### Does the machine suddenly switch off during a period of intensive use?

If the cooling-down period is too short, the machine switches itself off as protection against overheating. In this case, the rinse and milk buttons flash slowly for approx. 60 seconds. You can then operate the machine again.

## Frequently asked questions (continued)

### **Do I have to descale the machine if I use a water filter?**

Even if you use a water filter, mineral deposits may form in the machine depending on water quality and machine location. The machine must then be descaled in any case when the rinse button starts to flash red while a drink is dispensed. When the water filter is activated, it significantly extends the time until the machine has to be descaled again.

### **What is Standby/Eco mode?**

The machine returns to Standby/Eco mode when it is not used within the preset period. The machine uses considerably less energy in Standby/Eco mode (less than 0.5 W) than when it is ready for operation.

### **Reset machine to factory settings?**

Switch off machine. Hold down the "small cup" button and milk button together. Now press the on/off button. Then release the buttons. All illuminated buttons flash once as confirmation.

## Specifications and servicing

	220 - 240 V, ~ 50/60 Hz, max. 1455 W
	1 m
<b>P</b>	max. 19 bar
	approx. 1 l
	approx. 3.8 kg
	A = 150 mm B = 360 mm C = 280 mm (approx. 385 mm with lever open)
	 max. 150 mm
	10°C - 40°C
	approx. 93°C

If you have any queries or suggestions, please send us an email or call us on:

☎ **1800 469 373**

(Free of charge on land lines; for information on mobile phone surcharges, please contact your mobile phone provider.)

✉ **mail@k-fee-system.com.au**


🌐 **www.k-fee-system.com.au**

We advise you to keep the original packaging so that you can return the machine to an authorised customer centre in case repairs are necessary.

The packaging is recyclable. Ask the responsible authorities in your local council offices for further information about recycling.

**Environmental protection has priority**



The machine is made of valuable materials that are recyclable. For this reason only  dispose of the machine at a public recycling yard in your vicinity.

## Disposal instructions

Kruger ANZ  
Suite 7  
400 Canterbury Road  
Surrey Hills VIC 3127  
Australia

[k-fee-system.com.au](http://k-fee-system.com.au)

30106896

