

A black K-fee EXPRESSI multi-beverage capsule machine is shown on the left side of the image. It has a glass of coffee in front of it. The machine features three yellow circular icons on its side: a coffee cup, a mug, and a hand holding a cup. The background is dark with a pattern of blue and white dots on the right and red dots at the bottom.

EXPRESSI®

multi - beverage
capsule machine
MANUAL



your system.

Contents

Safety instructions	3
Machines – Overview	7
Start-up	8
Preparing beverages	9
Programming cup capacity.....	10
Cleaning the machine every day (after the last time you use it)	11
Optional: Cleaning the machine with a cleaning capsule (recommended)	12
Cleaning the machine with cleansing liquid (alternative)	14
Descaling the machine - monthly.....	15
Evaporating residual water	16
Frequently asked questions	17
Specifications and servicing.....	18
Disposal instructions	18
Guarantee terms	19
Notes	20

Symbols and warnings



The warning triangle is used in the instructions where risks can result to the user or the machine if the safety instructions are not followed.



Warning: Electric shock



Warning: Danger of scalding



Prohibited: Do not reach into machine.



Prohibited: Do not drink.



Recommended action

If you fail to comply with these operating instructions and safety instructions, the machine may become dangerous to operate. Please keep the operating instructions and include them with the machine if it is passed on to third parties.

Do not start the machine if it is damaged or if it does not work properly. In that case, immediately remove the plug from the power socket and contact the Service Hotline.

The machine is designed and manufactured for domestic use. The manufacturer assumes no liability for consequences arising from commercial use, use not in compliance with its intended purpose or non-compliance with the operating instructions. This machine is intended to make hot drinks as stipulated in the operating instructions.

This machine is intended for use in households and similar areas, such as staff rooms in offices and shops, as well as other work-related facilities; also on farms, for use by guests in hotels, motels and bed & breakfast establishments. The machine may only be used for its intended purpose.

Safety instructions (continued)

In case of long periods of absence, vacation etc., the machine must be emptied, cleaned and the power plug must be removed from the socket.

If there is risk of frost, all residual water must be removed, see the section on “Evaporating residual water” on page 16. The mains voltage must match the specifications on the type plate. Only connect the machine to a grounded 3-pin wall socket. If you connect the machine incorrectly, you may lose your warranty rights.

Do not damage the power cord by placing it on or near hot objects or over sharp edges. Do not allow the power cord to hang down (risk of tripping). Do not touch the power cord with wet hands. Do not remove the plug from the socket by pulling on the cable. If the power cord shows signs of damage, do not start the machine.

If the power cord of the machine is damaged, it must be replaced by the manufacturer, his company customer service

or a similarly qualified person in order to avoid any hazards.

Do not place the machine on a hot surface (e.g. cooker) or operate it next to heat sources or fires. Do not allow the machine to stand on its power cord. Always place the unit on a stable, level surface that is water-resistant.

Do not operate the appliance from within cupboard.

For health reasons, only fill the water tank with fresh drinking water.

How to avoid injuries and scalds when using the machine.

Do not leave the machine unattended while a drink is being prepared.

This machine may be used by children from the age of 8 years and older and by persons with reduced physical, sensory or mental abilities or who lack experience and knowledge in handling the machine, provided they are supervised or have been instructed regarding the safe operation of the machine, and understand the resulting dangers.

Cleaning or servicing the machine normally carried out by the user may not be carried out by children unless they are 8 years old or older and are acting under supervision.

The machine and its power cord must be kept out of the reach of children younger than 8 years. Do not allow children to play with the machine.

Never open the lever on the machine during the brewing, rinsing, cleaning or descaling processes. Do not place your fingers under the dispensing spout after completing a process and when opening the lever. Any residual liquid dripping may scald you. When the brewing process is finished, slowly open the lever to eject the capsule; do not bend over the capsule insertion opening (risk of hot liquid spraying).

Never reach with your fingers into the capsule insertion opening - risk of injury. Do not use the machine without its drip tray or drip grating.

Do not overfill the water tank. Never lift the machine by its lever.

Store the machine and all its accessories outside the reach of children.

Never open the machine or insert objects into the machine openings.

To avoid any hazards, any work beyond the normal use of the machine, its cleaning, descaling and maintenance, such as repairs or replacing the power cord may only be carried out by a customer service authorised by the manufacturer.

Before cleaning the exterior of the machine, unplug the power cord and allow the machine to cool down.

Do not clean the machine, power cord or power plug with water or immerse them in liquid. Do not clean the machine under flowing water. Never put the machine or its parts into a dishwasher.

Refer to the instructions on how to use all cleaning and descaling agents before use and comply with the safety regulations.

Safety instructions (continued)

Safety instructions (continued)

To prevent damage to the appliance do not use alkaline cleaning agents when cleaning, use a soft cloth and a mild detergent.

Never use a damaged or deformed capsule. Only use drink capsules marked with the K-fee® system logo and that are intended for the machine.

Capsules to be used:



Only use genuine K-fee® – your system capsules. Look for the red K-fee® – your system logo and the characteristic fluted shape of the capsules.

Using non-genuine capsules involves the following risks:

1. Health hazards

If you use non-genuine capsules, differences in brewing process and capsule design, it may cause hot water to escape under high pressure - risk of scalding.

2. Damage to the machine and warranty

If you use non-genuine capsules, differences in brewing process and capsule design, it will cause damage to the machine, which means that any warranty claims may be forfeited.

The manufacturer and his distribution partner cannot be held liable for any injury or damage which is the direct or indirect result of using non-genuine capsules in this machine.

These operating instructions are also available by request from kfee@k-fee-system.com.au

Machines - Overview

- 1 Drip grating
- 2 Upper drip tray
- 3 Lower drip tray
- 4 Spent capsule container
- 5 Spout
- 6 Controls
- 7 Capsule insertion opening
- 8 Lever
- 9 Water tank



Risk of scalding

The machine produces very hot water (when brewing, descaling, cleaning and rinsing). In order to prevent scalding and other injuries always ensure that the lever is fully closed when the machine is running. Do not reach under the spout and do not remove the drip tray.



Before using the machine for the first time, remove the protective foil from the drip grating (1).

① On/Off button

☕ Small cup

☕ Large cup

☕ Rinsing button

Risk of injury

Four pointed needles open the capsule in the machine. To avoid injury do not reach into the capsule insertion opening.



Start-up



Rinse water tank thoroughly with a smooth cleaning agent before first use.



Before starting up the machine, check the voltage on the type plate (see underside of machine).



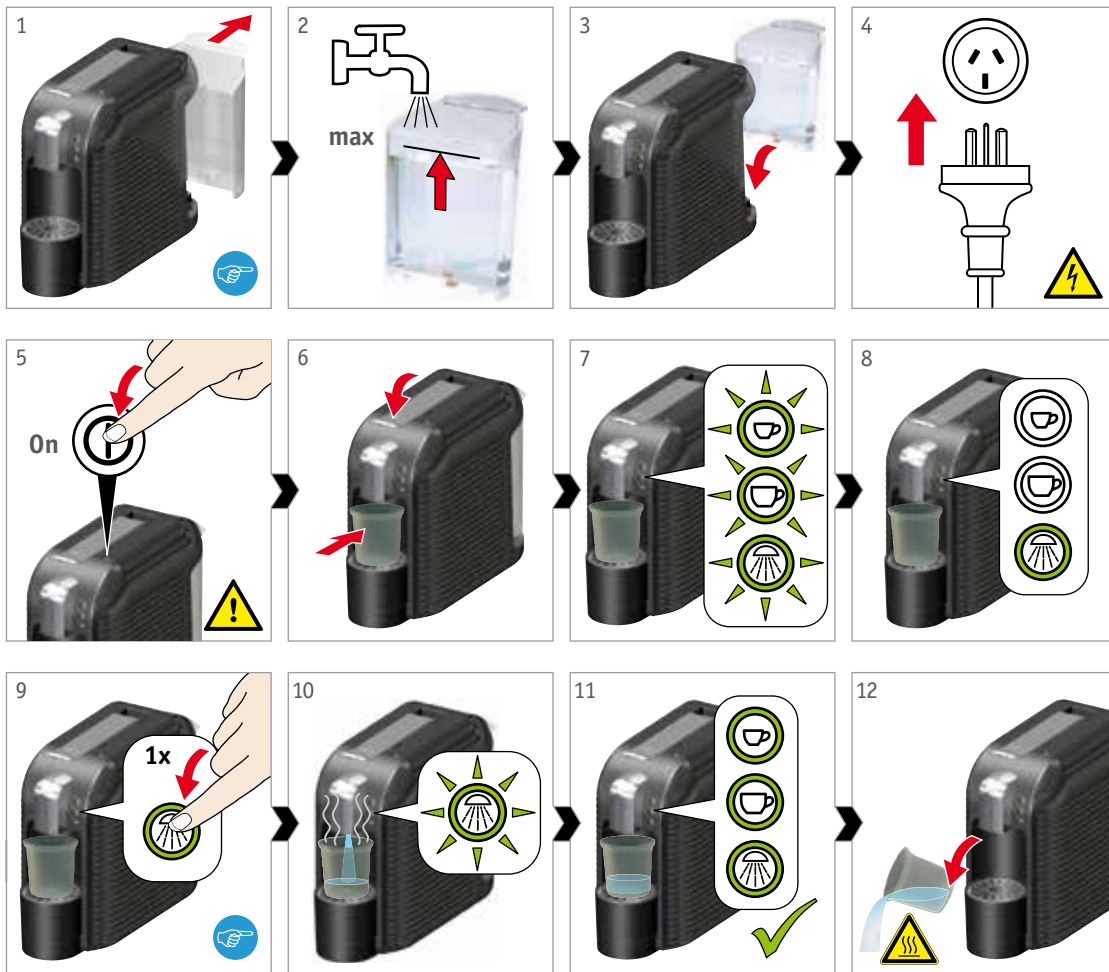
Please read the safety instructions first.

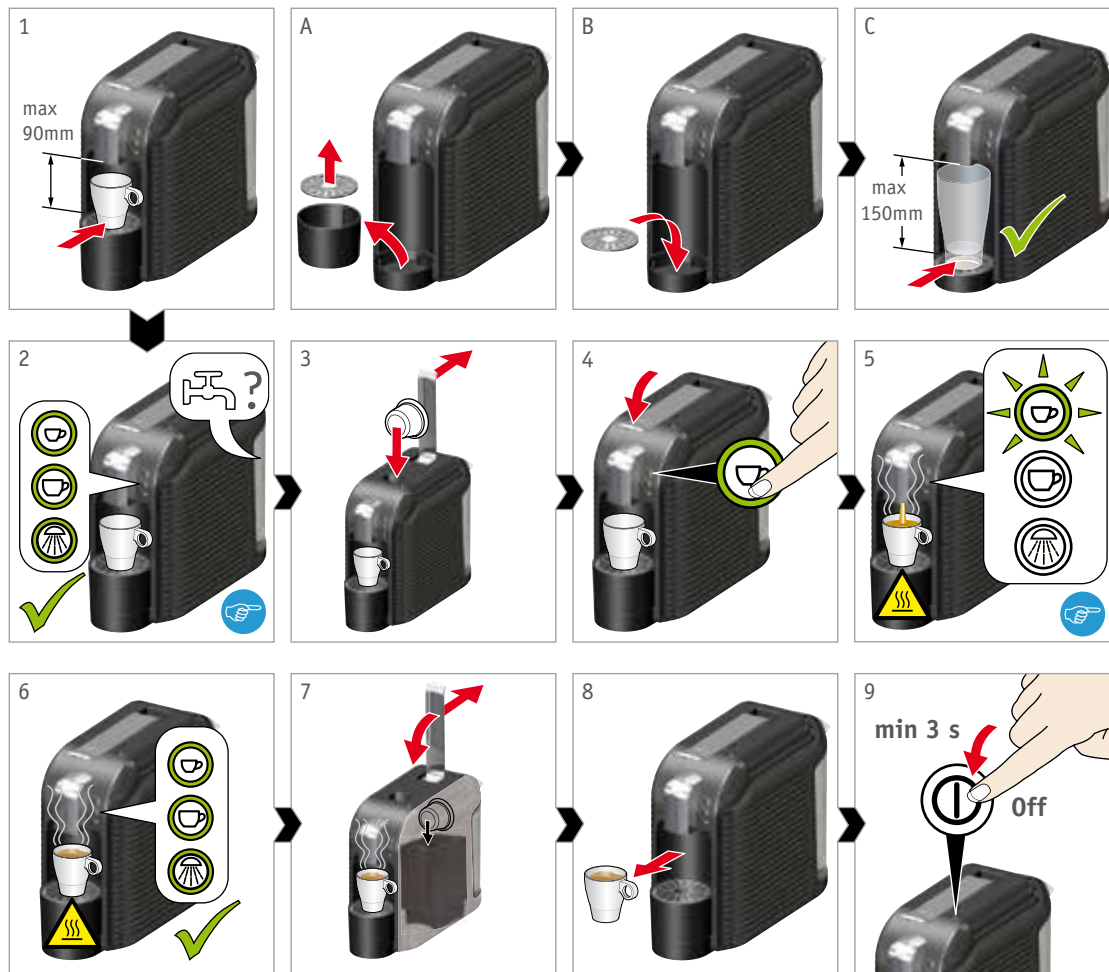


Recommendations for first startup: Press the rinsing button 5 times to rinse the machine thoroughly.



Risk of scalding
Very hot water.





Preparing beverages



The machine switches off automatically if it is not used within 5 minutes (p 18). If necessary, press the on/off button to reactivate the machine and rinse (p 8) before brewing new drinks. Important: Only insert the capsule after rinsing has finished.



Risk of scalding

Do not open the lever during the brewing process. Do not reach under the spout.



Stop the brewing process by pressing any button a second time.

Programming cup capacity



Please note - a capsule must be inserted when programming the cup capacity.



Matching the pouring capacity to your cup size:

Insert capsule and hold down the “Small cup” or “Large cup” button until the liquid reaches the level required in the cup. The new pouring capacity remains saved (even if power is interrupted).

• Presettings:

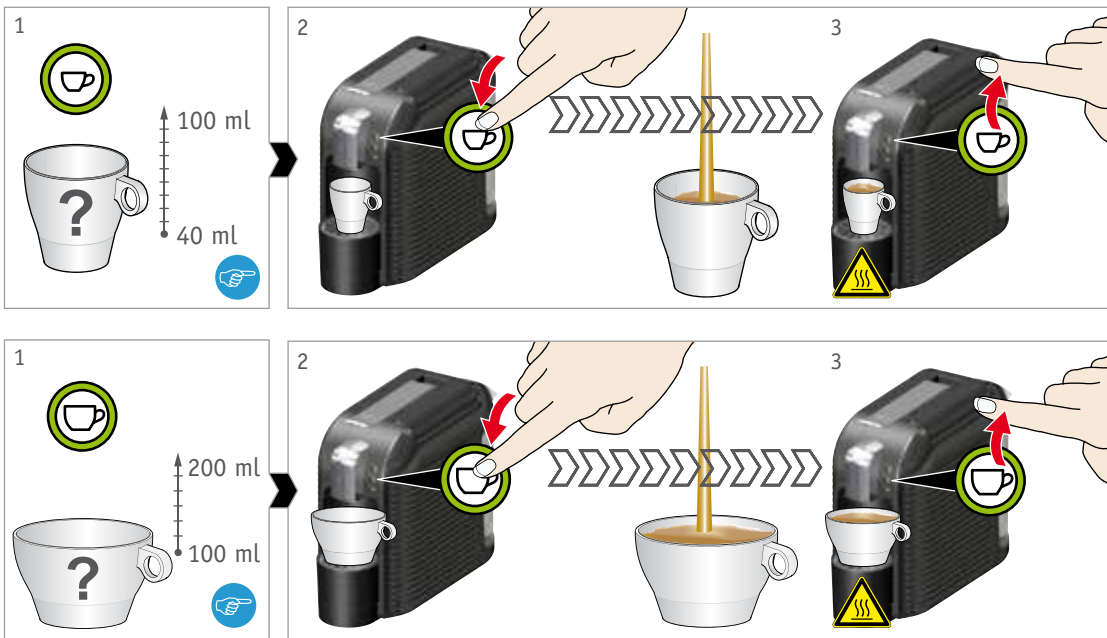
Small cupapprox. 50 ml

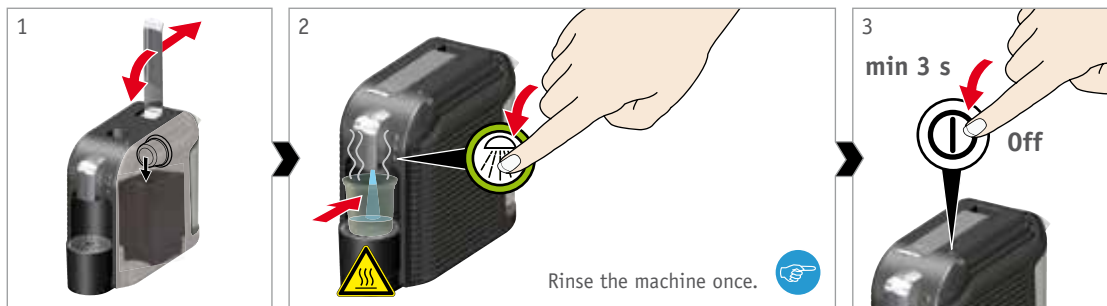
Large cup ... approx. 100 ml



Risk of scalding

Very hot drink.

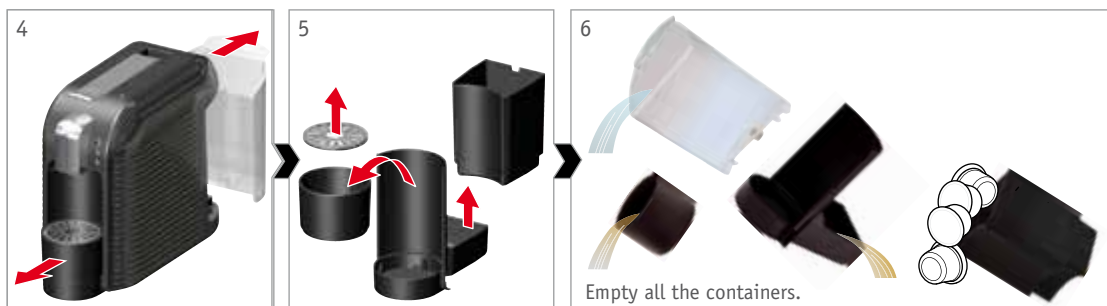




Cleaning the machine every day (after the last time you use it)



For hygiene reasons and in order to achieve top drink quality we recommend you rinse the machine before and after each drink is dispensed.



Risk of scalding
Very hot water.



Danger to health

Allowing machine to remain idle for an extended period without rinsing and cleaning after last use may cause internal spoilage that is difficult to remove.



Risk of damage

To prevent damage to the appliance do not use alkaline cleaning agents when cleaning, use a soft cloth and a mild detergent. Never use abrasive or aggressive detergents. Do not wash machine parts in the dishwasher.

Optional: Cleaning the machine with a cleaning capsule (recommended)



Danger to health

Read the operating instructions for the cleaning capsule carefully and follow the safety instructions.



Risk of scalding

Very hot water. Carefully empty drip tray and spent capsule container.



The water filter (optional) may remain in the water tank.



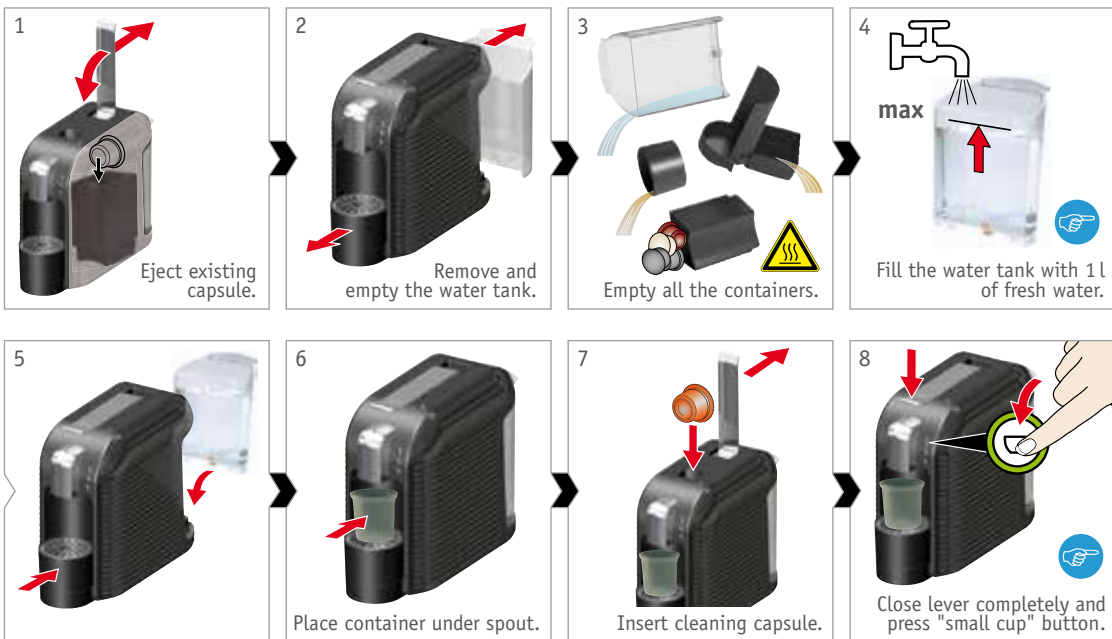
Please take into account that a full cup quantity may be programmed for the small cup (p 10).

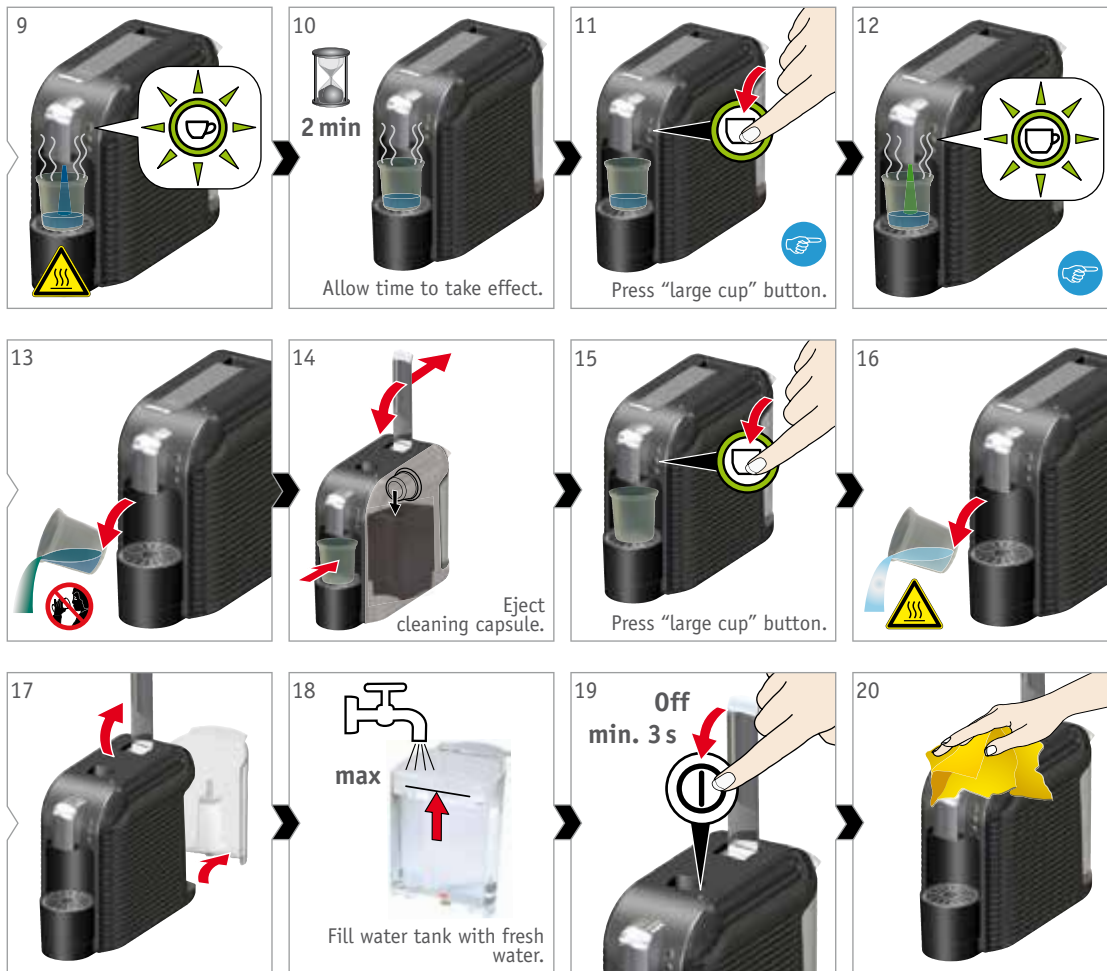


Only use cleaning capsules that are suitable for the K-free® system. For further information, please email: mail@k-free-system.com.au



For hygiene reasons we recommend you clean the machine with a cleaning capsule every two weeks. When using drinks capsules containing milk we recommend daily cleaning with cleaning capsules.





Optional: Cleaning the machine with a cleaning capsule (continued)



Risk of scalding
Hot cleansing liquid.



Please take into account that a full cup quantity may be programmed for the large cup (p 10).



Green water indicates that the cleaning process is running.



Danger to health
Do not drink any cleansing liquid.



Risk of scalding
Very hot water.

Cleaning the machine with cleansing liquid (alternative)



Danger to health

Read carefully the instructions for use of the detergent and comply with the safety instructions.



Clean machine with a K-free® System cleansing liquid once a month or shorter when using capsules containing milk.



Danger to health

Do not drink any cleansing liquid.

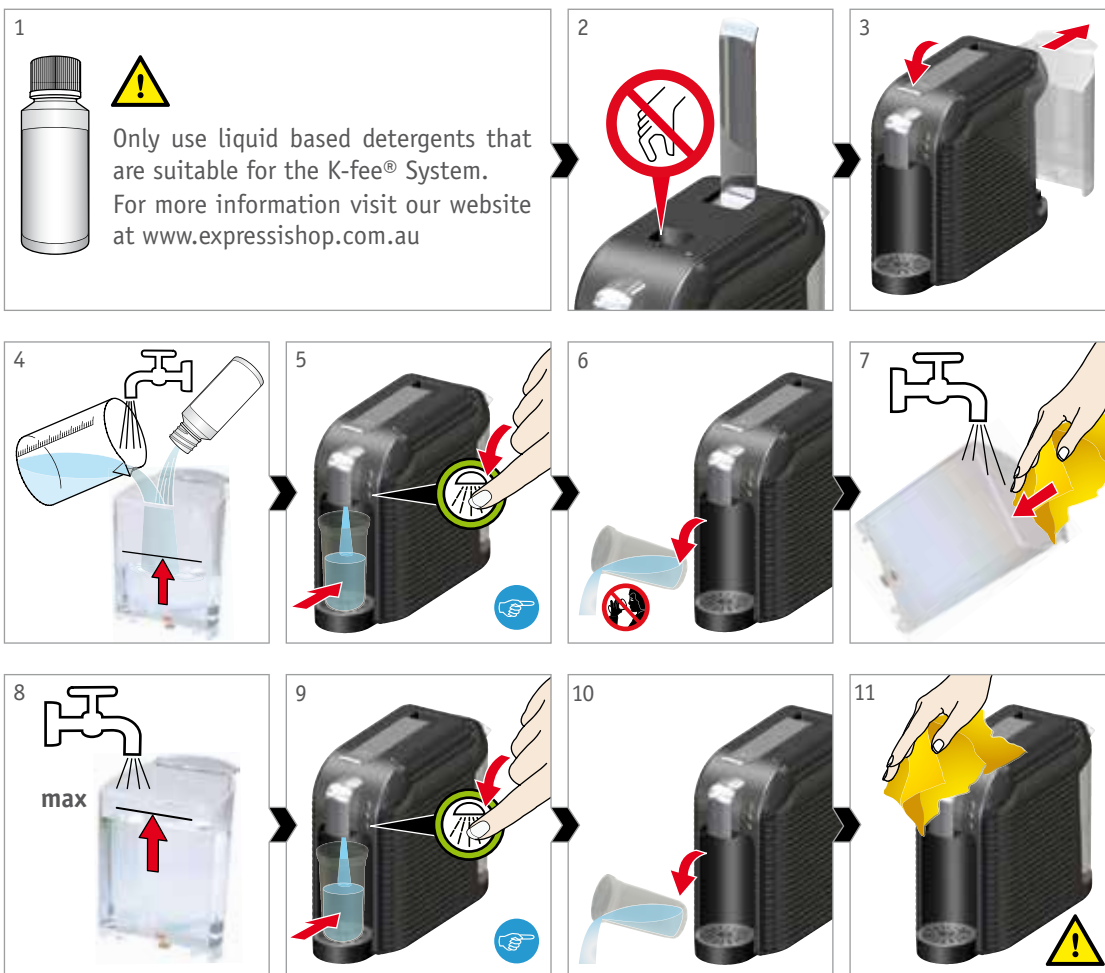


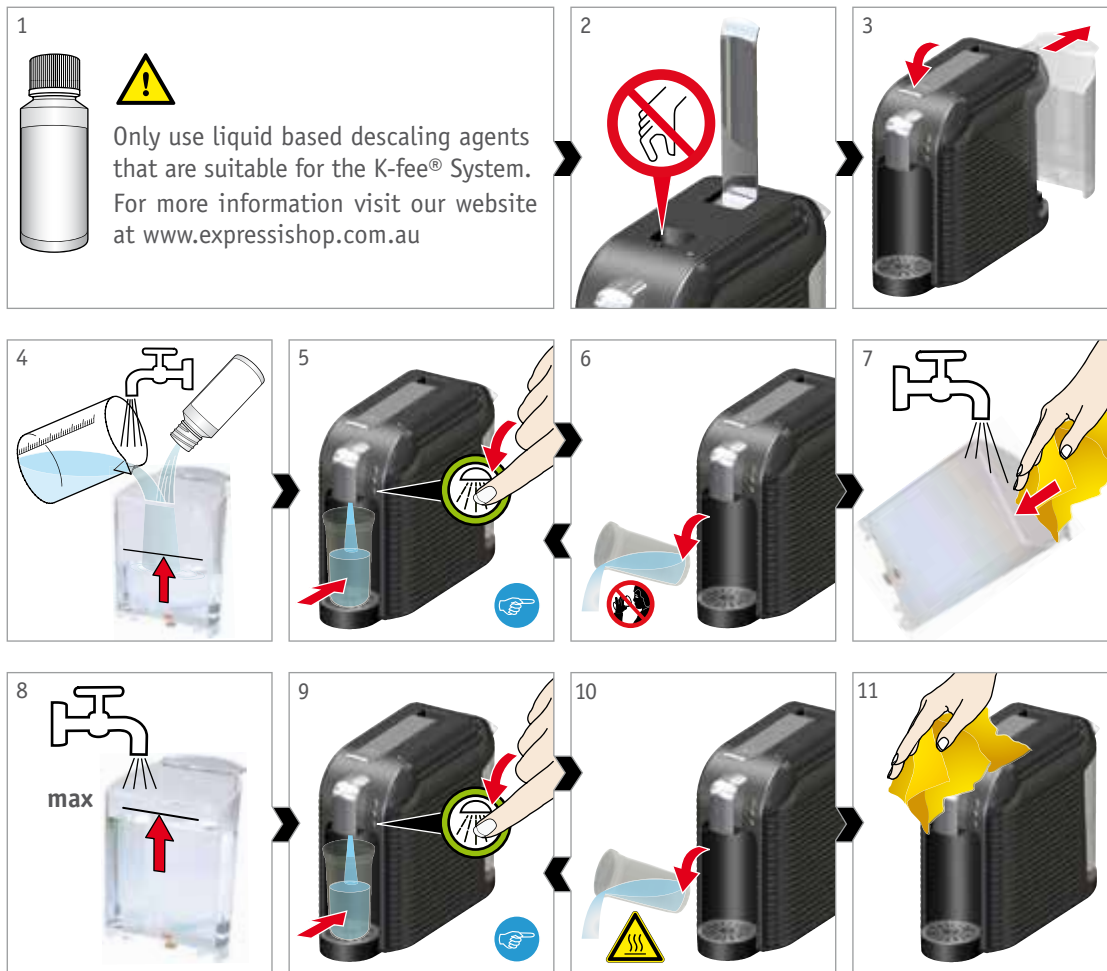
Rinse until the water tank is completely empty.



Risk of damage

To prevent damage to the appliance do not use alkaline cleaning agents when cleaning, use a soft cloth and a mild detergent.





Descaling the machine - monthly



Danger to health

Carefully read the instructions for use of the descaler and comply with the safety instructions. Never use any descaling products which are not suitable for the appliance (e.g. vinegar or citric acid) to avoid damage to the machine.



Descalcify the machine once a month using K-fee® System Descaler or as required.



Danger to health

Do not drink the descaling liquid.



Rinse until the water tank is completely empty.



Risk of scalding

Very hot water.

Evaporating residual water

With this function, any residual water in the machine is evaporated and removed as a preparation for transport or storage. Furthermore, this prevents any residual water from freezing in the machine when the machine is transported or stored at temperatures below freezing point.



CAUTION

Extreme temperatures may cause damage to the machine (permitted operating temperature 10°C - 45°C). For this reason the machine

- must be protected against frost,
- must not be used at temperatures below 10°C,
- must not be used at temperatures over 45°C.

Procedure

- If necessary, warm up the machine until it reaches room temperature.
- Open and close the lever in order to eject any existing capsule.
- Take out and empty the water tank.
- Place container under spout.
- Ensure that the machine is switched off.



WARNING

Risk of scalding! The evaporation process results in hot steam (up to 120°C) and hot water.

Do not reach under the spout and maintain a safe distance from the spout.

- Depress the “small cup” and the milk/rinse button at the same time. Now press the on/off button. Evaporation starts and the “large cup” button flashes green.
- After the evaporation process the machine switches off automatically.
- Remove and empty the container.
- Empty and dry the drip tray and spent capsule container.
- Reinsert the empty water tank.
- Use a dry cloth to wipe the front of the housing.

Why are all the buttons flashing at a fast rate?

This indicates a fault. Switch off the machine and unplug the mains cord from the wall socket. If the problem persists, call the K-fee® Hotline on 1800 469 373 or send an email to mail@k-fee-system.com.au

Why is the drink not dispensed properly?

Check that the spent capsule container is not full. Press the lever down completely. If necessary, descale the machine – refer to the section “Descaling the machine”.

Why is the drink dispensed with delay?

The machine is still heating up.

What do I do if the spent capsule container is overfull and jammed?

Try to remove the spent capsule container by jogging the container gently to and fro. The spent capsule container will only hold up to 10 spent capsules and needs to be regularly emptied.

Why is the drink not hot enough?

Preheat the cup. If necessary descale the machine – refer to the section “Descaling the machine”.

Why does the machine switch itself off suddenly when it is used intensively?

If used intensively, the machine may switch itself off as protection against overheating. In this case, allow the machine to cool down for approximately 30 minutes before using it again.

What happens if I lose or break a part of the coffee machine?

Replacement parts can be purchased online at www.expressishop.com.au. Alternatively, call the K-fee® Hotline on 1800 469 373 or send an email to mail@k-fee-system.com.au

Where can I obtain suitable cleaner and descaler?

Only liquid cleaning and descaling solution (not tablets) should be used in the K-fee® machine. For more information and availability, call the K-fee® Hotline on 1800 469 373 or send an email to mail@k-fee-system.com.au

How often should I descale the machine?

We recommend that you descale your machine approximately once a month or as required. The frequency depends on the water hardness and how frequently the machine is used. Never use vinegar, vinegar cleaners or citric acid as they can result in damage to the machine. Only use a descaling solution (not tablets).


Frequently asked questions





The machine will only work with capsules marked with the **K-fee®** – **your system** logo.

Specifications and servicing

If you have any queries or suggestions, please send us an email or call us on:


1800 469 373
 (Free of charge on land lines; for information on mobile phone surcharges, please contact your mobile phone provider.)


mail@k-fee-system.com.au


www.expressishop.com.au


We advise you to keep the original packaging so that you can return the machine to an authorised customer centre in case repairs are necessary.

Information on Automatic Switch-off


The machine switches off automatically if it is unused for more than 5 minutes. Please remember that the machine uses power as long as it is plugged into the mains socket (< 0.5 W).

The packaging is recyclable. Ask the responsible authorities in your local council offices for further information about recycling.

Environmental protection has priority!



The machine is made of valuable materials that are recyclable. For this reason, contact your local waste management recycling centre for correct disposal.

	220 to 240 V~, 50 Hz, max. 1455 W
	1 m
P pressure	max. 19 bar
	1 l
	3.8 kg
	A = 150 mm B = 378 mm C = 297 mm
	 max. 150 mm
	10°C - 45°C
	~ 90°C



EXPRESSI[®]



Warranty Details

REGISTER YOUR PURCHASE AT www.aldi.com.au/en/about-aldi/product-registration/TO KEEP UP-TO-DATE WITH IMPORTANT PRODUCT INFORMATION

K-free System capsule machine

The product is guaranteed to be free from defects in workmanship and parts for a period of 24 months from the date of purchase. Defects that occur within this warranty period, under normal use and care, will be repaired, replaced or refunded at our discretion. The benefits conferred by this warranty are in addition to all rights and remedies in respect of the product that the consumer has under the Competition and Consumer Act 2010 and similar state and territory laws.

Our goods come with guarantees that cannot be excluded under the Australian Consumer Law. You are entitled to a replacement or refund for a major failure and for compensation for any other reasonably foreseeable loss or damage. You are also entitled to have the goods repaired or replaced if the goods fail to be of acceptable quality and the failure does not amount to a major failure.

AFTER SALES SUPPORT

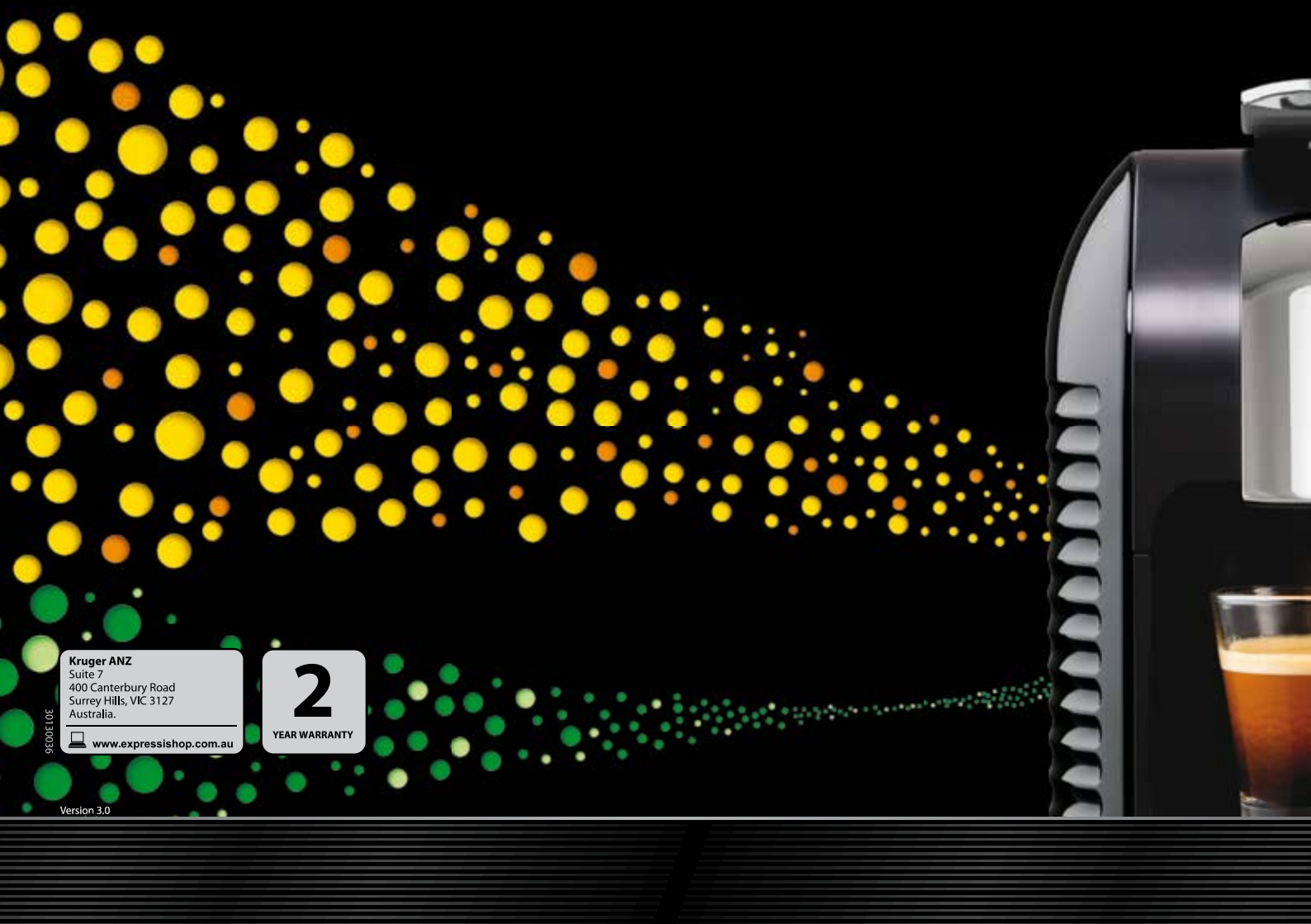
 (AUS) 1800 469 373

(Free of charge on land lines; for info on mobile phone surcharges, contact your mobile phone provider)

 www.expressishop.com.au



Notes



Kruger ANZ

Suite 7
400 Canterbury Road
Surrey Hills, VIC 3127
Australia.



www.expressishop.com.au

2

YEAR WARRANTY

9E00S10E

Version 3.0