

A glass of coffee with a splash of milk and three coffee capsules falling into it.

EXPRESSI[®]

MULTI-BEVERAGE
CAPSULE MACHINE

MANUAL



your system.

Contents

Safety information.....	Page	3
Appliance overview.....	Page	6
Explanation of controls.....	Page	7
Initial start-up.....	Page	8
Inserting the water filter (sold separately)	Page	10
Preparing drinks.....	Page	12
Programming cup capacity.....	Page	14
Resetting to factory settings.....	Page	15
Daily maintenance	Page	16
Cleaning with cleaning fluid.....	Page	18
Cleaning with a cleaning capsule	Page	20
Descaling the appliance	Page	22
Evaporating residual water	Page	24
Frequently asked questions.....	Page	26
Specifications / Service / Disposal information	Page	28
Warranty.....	Page	29
Notes	Page	30

Symbols and warning information



SAFETY INFORMATION

The warning triangle is used at locations in the instructions where non-observance of the safety information can result in risks for the user or the appliance.



WARNING

Electric shock



WARNING

Scalding hazard



PROHIBITED

Do not reach inside



PROHIBITED

Do not drink



REQUIREMENT

Read instructions



INFO

General information



NOTE Recommended course of action

Safety information

This instruction manual and the safety information are provided to guide you towards safe appliance operation. Disregarding them can lead to hazards caused by the appliance. Please keep these instructions safely and hand them over with the appliance if it is passed on or sold.

The appliance is intended for the preparation of hot drinks in accordance with the operating manual. It is exclusively intended for domestic use only.

The manufacturer accepts no liability for consequences resulting from commercial usage, inappropriate use or non-observance of the instruction manual.

Operational requirements:

Only operate an undamaged appliance which is in perfect working order. Always disconnect a defective appliance from the power supply immediately and call our service hotline.

Place the appliance and its cord on a stable, level and water-repellent surface out of the reach of children. Never place on hot surfaces (e.g. hot plates or cookers) and within 50 cms of a heat source (ie microwave or fires).

Do not operate the appliance from within cupboard.

When connecting to the power supply, ensure that the mains voltage complies with the information on the nameplate. The appliance may only be connected to earthed, triple-pole sockets. Otherwise your warranty rights may cease. Ensure that the mains cable is not damaged:

- no contact with sharp-edged or hot objects
- do not place the appliance on the cable
- do not pull the plug out of the power socket using the cable
- do not allow the cable to hang - tripping hazard

If the supply cord is damaged, it must be replaced by the manufacturer, its service agent or similarly qualified persons in order to avoid a hazard.

If the machine is not required for use of an extended period of time (greater than 24 hours) the following is highly recommended. Please empty the appliance, evaporate the residual water (see page 24/25), unplug device from mains power and thoroughly clean appliance.

Safety information (continued)

This appliance can be used by children aged from 8 years and above and persons with reduced physical, sensory or mental capabilities or lack of experience and knowledge if they have been given supervision or instruction concerning use of the appliance in a safe way and understand the hazards involved.

Children shall not play with the appliance.

Cleaning and user maintenance shall not be made by children without supervision.

Avoid scalding and injuries:

Never leave the appliance unsupervised when preparing hot drinks. Never open the lever on the appliance during the brewing, rinsing, cleaning or descaling processes. When you open the lever after completing the relevant process, never hold your finger underneath the drinks spout - scalding hazard due to residual liquid continuing to drip.

When opening the lever to eject the capsule after the brewing process, never bend over the capsule insertion opening - hot liquids can spray out!

You should also never insert your

finger into the capsule opening - injury hazard.

Please never use the lever to lift the appliance. Ensure that children do not insert any objects into appliance openings. Only ever use the appliance with the drip tray and the draining rack (exception: an "extra-large cup" is placed on the base plate without the drip tray). Do not overfill the water tank. You should only ever fill the tank with fresh drinking water for health reasons.

Cleaning and maintenance:

Cleaning and descaling the appliance may only ever be carried out using the cleaning and descaling agents intended. In this case, please proceed in accordance with the instruction manual and safety regulations. Always remove the power plug before cleaning the outside of the appliance, and allow it to cool down. The appliance, mains cable or mains plug may not be cleaned wet, held under flowing water or immersed in liquids.

CAUTION: To prevent damage to the appliance do not use alkaline cleaning agents when cleaning, use a soft cloth and a mild detergent.

Safety information (continued)

Never place the appliance or parts of it in the dishwasher.

Switch the appliance off at power supply (240V plug) at the end of the day or periods of absence.

Apart from the normal brewing and care operations, all other measures such as repairs or exchanging the mains cable may only be carried out by customer service personnel authorized by the manufacturer.

Use of drink capsules:

In order to avoid hazards, please never insert damaged or deformed drink capsules.

Should you ever experience any unusual interruption to the brewing cycle please contact 1800 469 373.

Furthermore, you should only ever use original **K-fee® – your system** drink capsules with the red **K-fee® – your system** logo and the characteristic grooved capsule shape.

Capsules to be used !



The use of non-original capsules can lead to the discharge of hot water and steam under high pressure due to the differences in brewing processes and capsule structure - scalding hazard. Apart from this, the appliance may be damaged and your warranty claims may become invalid.

If non-original capsules are used in this appliance, neither the manufacturer nor any sales partners can be made liable for injuries or material damages which occur as an immediate consequence of the above. This operating manual is also available on

www.expressishop.com.au



WARNING

The appliance produces extremely hot water (during brewing, descaling, cleaning, rinsing and steaming). To avoid injuries, always ensure that the lever is completely closed when the appliance is operating. Never reach under the spout and do not remove the drip tray during operation - **scalding hazard.**

Appliance overview / scope of delivery



- 1 Used capsule container
- 2 Function buttons
- 3 Capsule insertion opening
- 4 Lever
- 5 Water tank lid
- 6 Water tank
- 7 Water filter (sold separately)
- 8 Draining rack
- 9 Drip tray
- 10 Spout



PROHIBITED

Four sharp needles are used to open the capsules in the appliance. To avoid injuries, do not reach into the capsule insertion opening - **injury hazard**.



NOTE

Before initial use, remove the protective film from the draining rack (8).

Explanation of control panel

Function buttons



..... **small cup**
setting range:
30 - 100 ml
factory setting:
45 ml



..... **large cup**
setting range:
80 - 200 ml
factory setting:
105 ml



..... **rinse/milk button**
(also serves as
rinsing button)
factory setting:
65 ml

LED signals



All drink buttons illuminate white:
the appliance is ready for operation,
all buttons can be used.



All drink buttons blink white:
please wait, the appliance is heating up.

One of the drink buttons is blinking white:
the appliance is providing a drink.

All drinks buttons are blinking rapidly white:
Error or fault message.



Rinse/milk button blinks white:
rinsing process



INFO

All the parts shown here and the original instruction manual are included in delivery. Before initial start-up, please check the delivery for completeness.

Initial start-up



SAFETY INFORMATION

Before initial start-up, it is imperative that you read the safety information on pages 3-5.

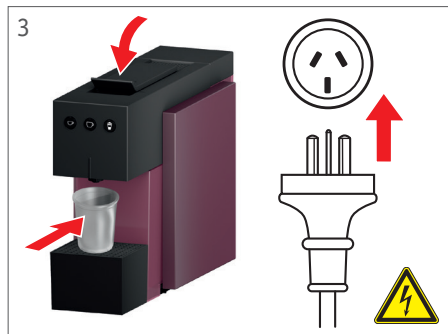


NOTE

1. If the appliance has been subjected to cold temperatures or frost (refer to guidelines on page 24), please wait at least three hours before switching on.

2. We recommend the use of a water filter for long and optimum coffee enjoyment. Please insert this only after the initial start-up. Please read the instructions on pages 10/11 for this purpose.

3 Connect the appliance to the power supply, press the lever right down to the bottom and place a collecting container under the spout. The device automatically switches over to off/standby mode.

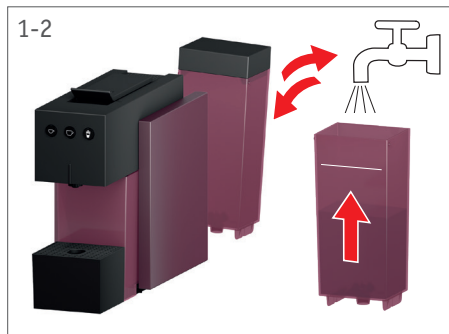


WARNING

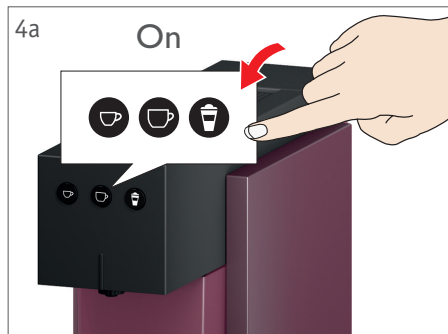
Before initial start-up, please ensure that the mains voltage complies with that stated on the name-plate (underside of appliance / 240V).

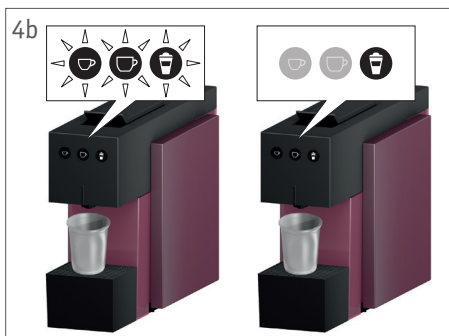
1 Remove the water tank and clean it with a mild cleaning agent.

2 Fill it up with fresh drinking water and replace it in the appliance.

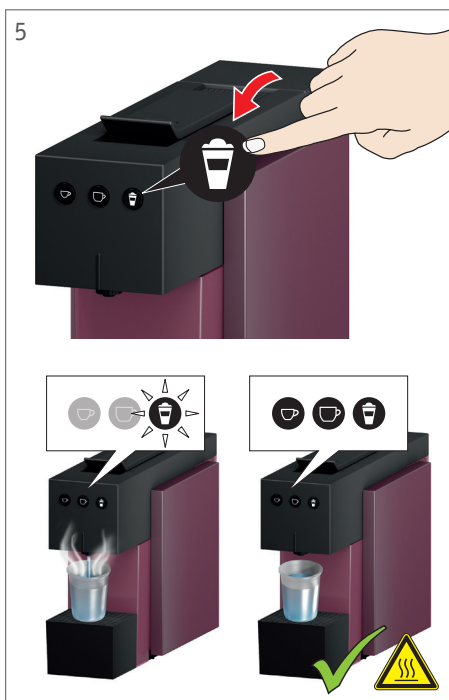


4 If you press any of the buttons the appliance will switch on and heat up (see figure 4a). All button symbols blink (see figure 4b). After heating up, only the rinse/milk button which is used for rinsing is illuminated.





5 Press the rinse/milk button to activate the rinsing process. The rinse/milk button will blink during the rinsing process, and all the button symbols will illuminate when it is complete.



WARNING Very hot water – scalding hazard.

6 Empty the collecting container afterwards. The appliance is ready for use.



NOTE

On this appliance, the rinse/milk button is also used to activate the rinsing process. You should repeat the complete rinsing process 4 times before using the appliance for the first time. To do this, press the rinse/milk button again after each rinsing process.



INFO

The rinsing button will illuminate after the appliance has heated up each time you start the appliance up from cold. Please rinse once.

The appliance is immediately ready for use once it has been heated up to brewing temperature when started up from hot.

Inserting the water filter (sold separately)



SAFETY INFORMATION

Read the user and safety information about the water filter through carefully. We recommend that you replace the water filter every 3 months at the latest for hygienic reasons.

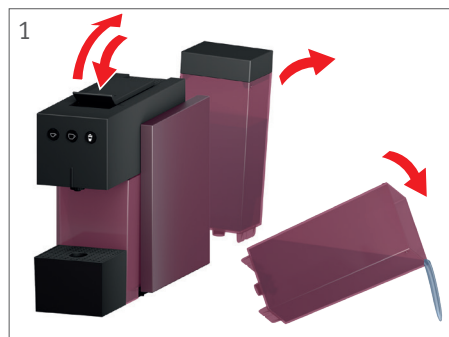


INFO

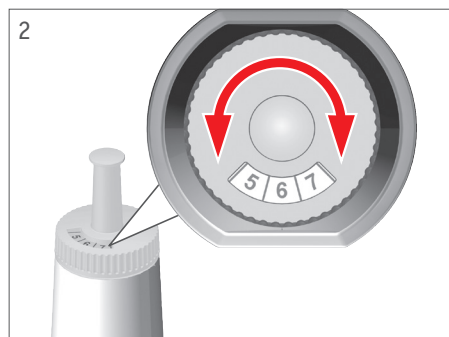
This water filter protects your appliance against calcification and reduces the number of times you have to descale it. It also removes undesirable odours and flavourings such as chlorine etc. and therefore improves the quality of your drinks. Please only use water filters which are suitable for **EXPRESSI** capsule machines. For further information please visit www.expressishop.com.au



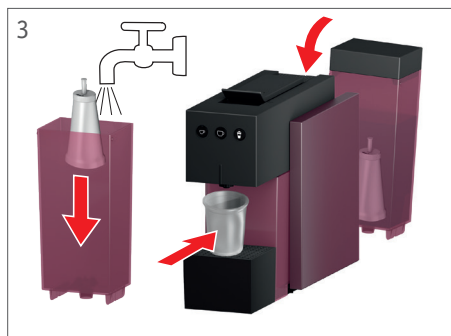
1 Open and close the lever so that you eject any capsule which might not have been released into the spent capsule container. Now remove and empty the water tank.



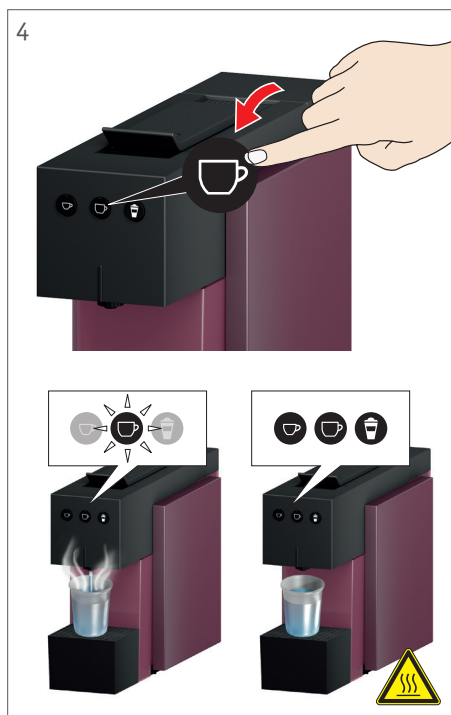
2 Set the insertion date (month) using the rotating scale on the water filter. The expiry date is automatically displayed.



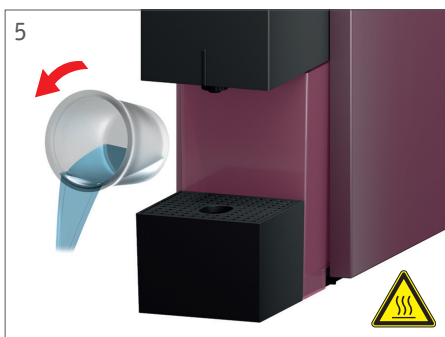
3 Insert the filter into the empty water tank. Now fill the water tank with fresh drinking water. Put it back into the appliance and place a collecting container under the spout.



4 Press the "Large cup" button (without a capsule). The buttons will blink as water is filtered through the machine. When all button symbols are illuminated repeat the rinse process as necessary until clear water runs out continuously.



5 Empty the collecting container.



WARNING Very hot water – scalding hazard.

6 Repeat rinsing process with each new filter replacement.

Tips for more enjoyment



Information on using bottled fresh water:

If you prefer to prepare your coffee using non-carbonated bottled water, please note: depending on its origin, this is not necessarily softer than drinking water from the tap. Your appliance can become calcified just as quickly.

Please do not use carbonated mineral water under any circumstances.

Preparing drinks (e.g. espresso)



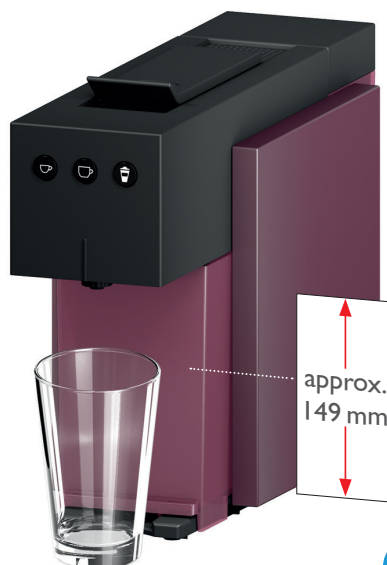
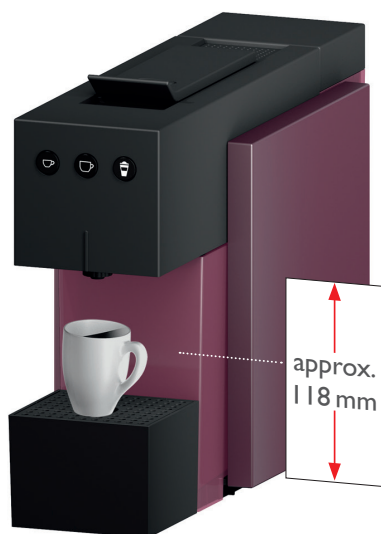
INFO

The appliance automatically switches itself off after 5 minutes. This means that you have to switch the appliance on again by pressing any button before preparing drinks. Now complete the rinse process outlined in step 3-5 in the initial start-up instruction without a capsule inserted. (This rinse step should be performed before and after preparing drinks).

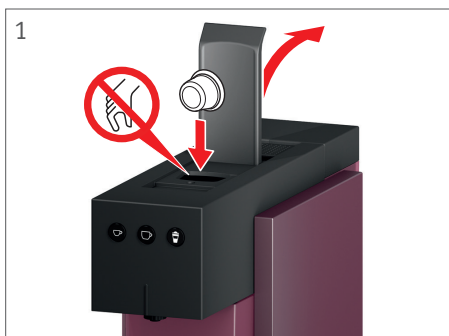
If you are preparing a drink using milk capsules, please observe the relevant instructions on the capsule packaging.



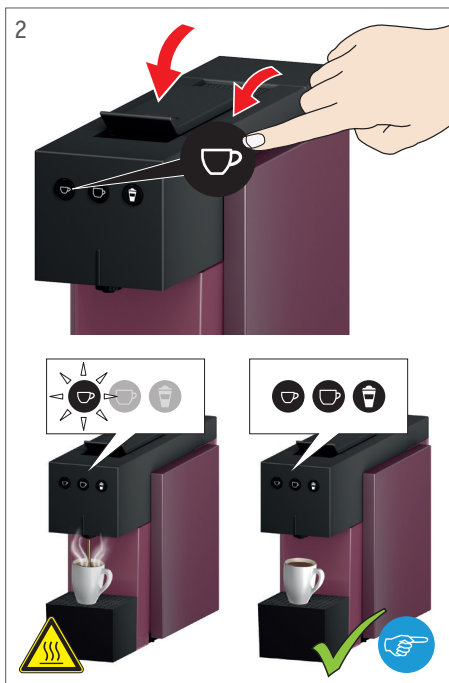
NOTE The appliance has been designed for the preparation of small cups / espresso and large cups. Before you place extra-large cups or glasses, for example for latte macchiato under the spout, you have to remove the drip tray first. Please replace this under the spout again immediately when you have finished.



1 Open the lever and insert a capsule.



2 Close the lever completely and start the brewing process by pressing the required cup size (example "Small cup"). The button will blink during the selected brewing process, and all the button symbols will illuminate when it is complete.



NOTE

You can stop the brewing process by pressing any of the buttons.

3 Open the lever to activate capsule ejection. Close the lever again and remove your drink.



WARNING Very hot water – scalding hazard.



PROHIBITED Do not reach inside – injury hazard.

Tips




for more enjoyment



Coffee brewed to your personal tastes:

EXPRESSI offers a wide range of coffee and speciality capsules with a variety of taste profiles and strengths for your enjoyment.

Programming cup capacity

Buttons	setting range [ml]	factory setting [ml]
	30 - 100	45
	80 - 200	105
	/	65

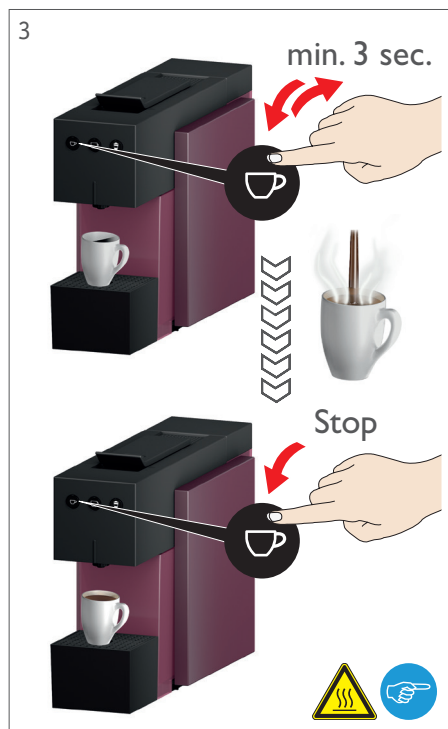
1 Complete steps 1-5 outlined in the initial start up. Then place the required cup under the spout.

2 Open the lever and insert the required capsule. Now close the lever completely again.



PROHIBITED Do not reach inside – **injury hazard.**

3 Now press the button for the required cup size for at least 3 seconds to activate programming. Release the button. The button will blink rapidly during programming. Water will commence dispensing. Once required quantity has been reached, press the button again to automatically save this new setting.



WARNING Very hot water – scalding hazard.



NOTE It is possible to reset the appliance to the factory settings (see P. 15).

Resetting to factory settings



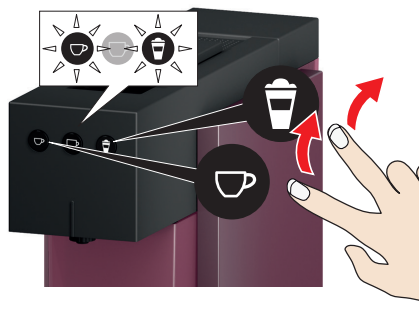
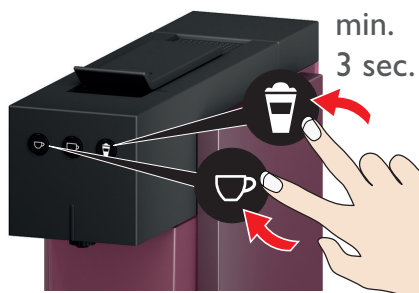
INFO

Resetting the appliance to the factory settings deletes your individual settings for cup capacity.

1 Allow the appliance to go into the automatic off/standby mode (automatic switch-off 5 minutes after last use).

2 Now press the "Small cup" button and the rinse/milk button simultaneously, and keep the buttons pressed for at least 3 seconds. Release the buttons. Both buttons will blink briefly once to confirm resetting to factory settings.

2



INFO

The factory setting is 5 minutes in order to avoid unnecessary energy consumption and to protect the environment. This means that the appliance automatically switches itself off after 5 minutes of non-use. This means that your **EXPRESSI** capsule machine uses considerably less energy: the appliance consumes considerably less power (less than 0.5 W) than it does in operating mode. During periods of absence and at the end of the brewing day, switch the appliance off at power supply (240V plug).

Daily maintenance



NOTE

We recommend that you carry out a rinse process before and after each time you prepare a drink to ensure optimum drink quality and for hygienic reasons.

Please remember: if you do not place a collecting container under the coffee spout during each rinse process, the drip tray will fill up very quickly and may overflow.

1 Place a collecting container under the spout. Open the lever and close it again to activate capsule ejection.

2 Rinse the appliance by pressing the rinse/milk button, and empty the collecting container afterwards.

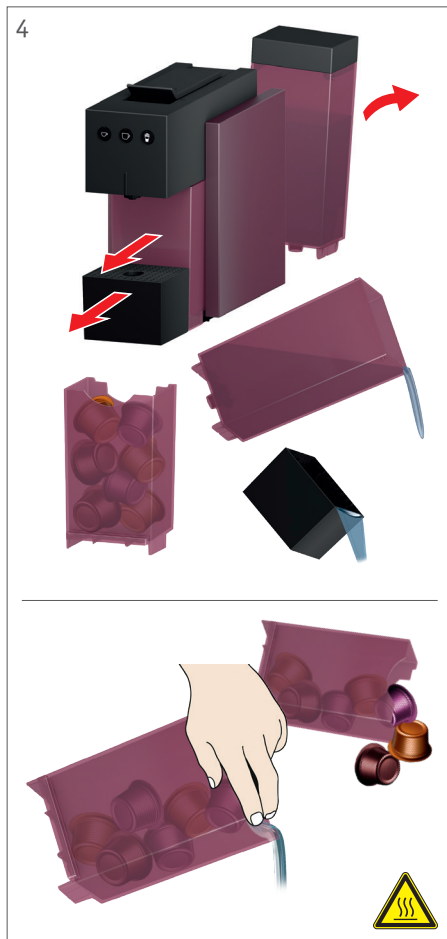


WARNING Very hot water – scalding hazard.

3 Please wait 5 minutes until the appliance switches off automatically.

4 Remove the drip tray, the used capsule container and the water tank. Please empty all containers.

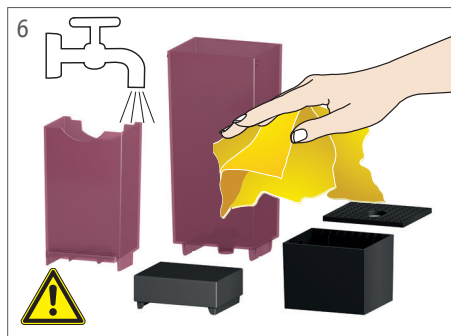
Caution: The used capsule container is enclosed on the underside and can contain residual liquid. Please pour any residual liquid into the washbasin first before disposing of the capsules in the waste bin.



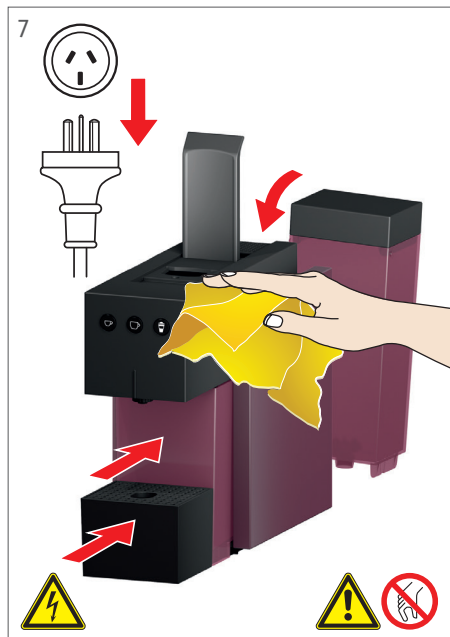
5 Rotate the spout and remove it. Please now rinse this out with hot water and screw it on again.



6 Hand wash all removable containers in clean warm soapy water.



7 Take the mains plug out of the mains socket. Open the lever and clean the appliance from outside. After this, refit all the containers into the appliance. Leave the appliance unplugged from the main power until your next use.



PROHIBITED Do not reach inside – injury hazard.



SAFETY INFORMATION

Risk of damage! Only use a moist cloth and, if required, a mild cleansing agent. Never use scouring agents or aggressive cleansing agents. Never wash appliance components in the dishwasher.

Cleaning with cleaning fluid



INFO

You can also use a suitable cleaning fluid instead of cleaning capsules. Cleaning interval: 1 x monthly, more often if using drink capsules containing milk.



NOTE

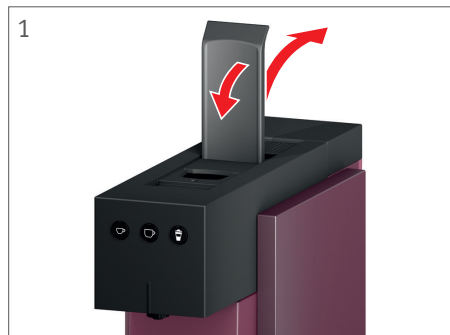
Only use cleaning fluids which are suitable for **EXPRESSI** capsule machines. For further information regarding product suitability please visit www.expressishop.com.au



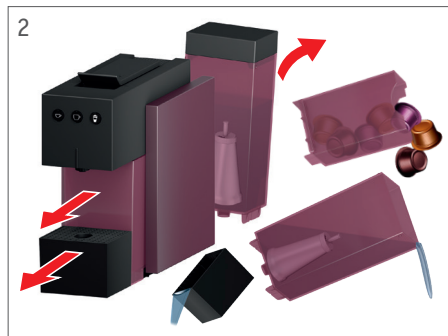
SAFETY INFORMATION

Before using the cleaning fluid, please read the instruction manual through carefully and observe the warning information.

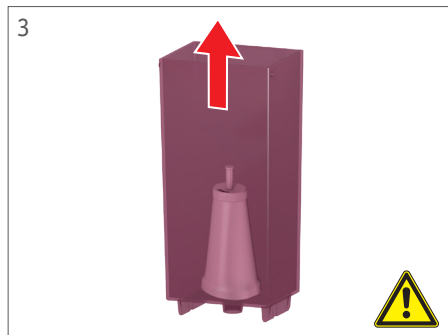
1 Open and close the lever to eject any capsule which might have been previously inserted.



2 Remove and empty the drip tray, the used capsule container and the water tank. Then replace the used capsule container.



3 If you are using a water filter, take this out of the water tank.

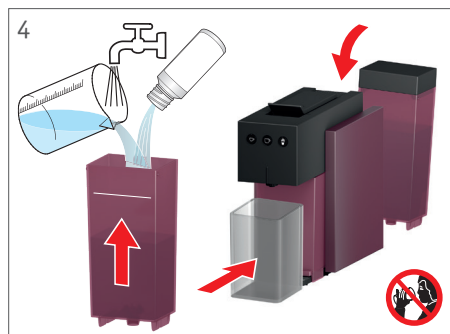


HEALTH HAZARD

Remove the water filter before the cleaning process.

4 Fill the water tank with the cleaning fluid at the prescribed mixing ratio (as per

product instructions) and insert it into the appliance. Place a sufficiently large collecting container under the spout.



PROHIBITED

Do not drink the cleaning fluid – **health hazard.**

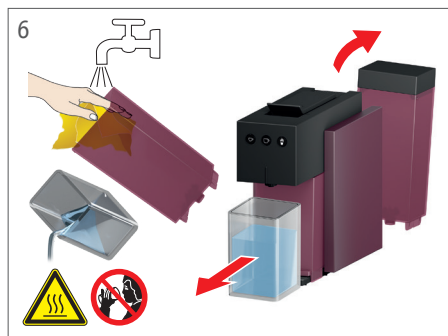
5 Now press the rinse/milk button to start rinsing. Please repeat this process until the water tank is empty.



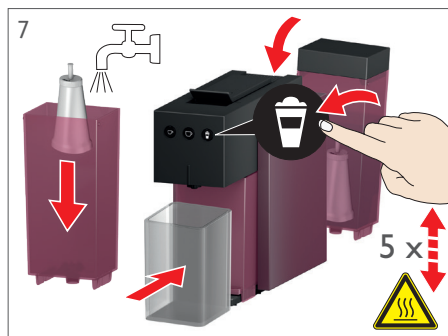
WARNING Very hot water – scalding hazard.

6 Once the cleaning process is complete, the water tank and the collecting

container must be emptied, rinsed out thoroughly and cleaned.



7 Reinsert the water filter (optional). Fill the water tank with fresh water and replace it in the appliance. Place the collecting container under the spout, press the rinse/milk button to rinse the machine. Repeat this step 4 more times, to ensure a final rinse of the machine.



8 Empty the collecting container afterwards. Replace the drip tray. The appliance is now ready for use.

Cleaning with a cleaning capsule



Only use cleaning capsules which are suitable for **K-fee® – your system** capsule machines.

For further information regarding product suitability please visit www.expressishop.com.au



INFO

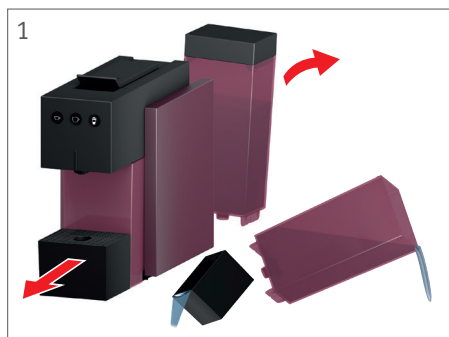
For hygiene reasons we recommend that you carry out a cleaning process using cleaning capsules every 2 weeks (if you are using drink capsules containing milk, please clean the appliance every day).



SAFETY INFORMATION

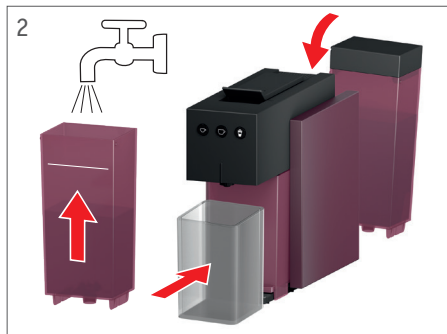
Before using the cleaning capsule, please read the instruction manual through carefully and follow the warning information.

- 1** Please remove the drip tray and the water tank. Empty both.

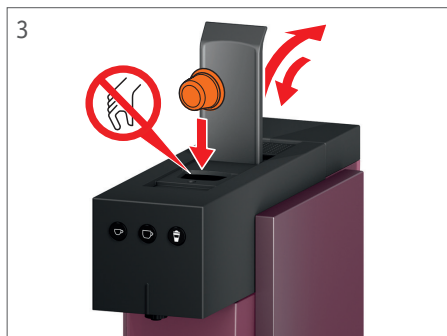


- 2** Fill the water tank with fresh water. Reinsert the water tank in the appliance

and place a sufficiently large collecting container underneath the spout.



- 3** Open the lever and insert the cleaning capsule. Now close the lever completely again.



PROHIBITED Do not reach inside – injury hazard.

- 4** Press the "Small cup" button. Between 40 and 60 ml of blue cleaning fluid will now run through the appliance.



NOTE Exact water quantities dispensed in steps 4 and 5 will depend on the machines current programmed cup capacity. To meet minimum volumes in step 4 and 5 reset factory settings (page 15) prior to cleaning process.



WARNING Very hot water – scalding hazard.

5 Now leave the cleaning agent 2 minutes to activate. Start the cleaning process by pressing the "Large cup" button (minimum quantity 100 - 200 ml). The cleaning fluid may turn slightly green during the cleaning process.



PROHIBITED
Do not drink the cleaning fluid – health hazard.

6 Now open the lever, activate capsule ejection, close the lever and empty the collecting container. Replace the empty collecting container under the spout again.



7 Now press the "Large cup" button again to rinse the appliance out with fresh water (do not insert a capsule!). Repeat this process until the water dispensing from the spout is clear.



8 To complete, remove the collecting container and the water tank, empty them and clean in hot water. Then fill the water tank with fresh water and replace it in the appliance with the drip tray.

Descaling the appliance



INFO

We recommend you to descale the appliance once a month, in case of using a water filter once a year.



NOTE

Only use descaling agents which are suitable for **EXPRESSI** capsule machines. For further information regarding product suitability please visit www.expressishop.com.au



SAFETY INFORMATION

Before using the descaling agent, please read the instruction manual through carefully and follow the warning information.



PROHIBITED

Do not drink the descaling agent – **health hazard**.



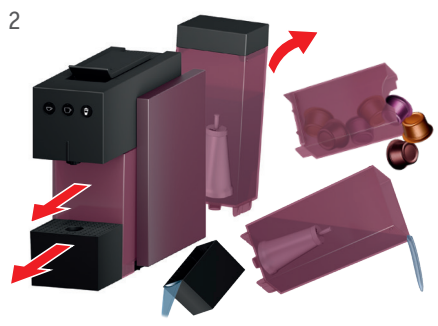
HEALTH HAZARD

Remove the water filter before the descaling process.

1 The appliance must be in off/standby mode. Only open and close the lever after this to eject any capsule which might have been inserted.

2 After this, remove the drip tray, used capsule container and water tank, empty them and reinsert the used capsule container.

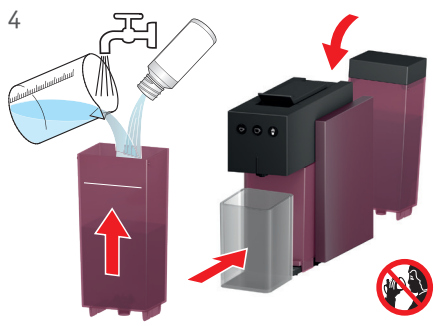
2



3 If you are using a water filter, please remove it from the water tank.

4 Fill the water tank with the descaling agent at the prescribed mixing ratio (as per product instructions) and insert it in the appliance. Place a sufficiently large collecting container under the spout.

4



PROHIBITED

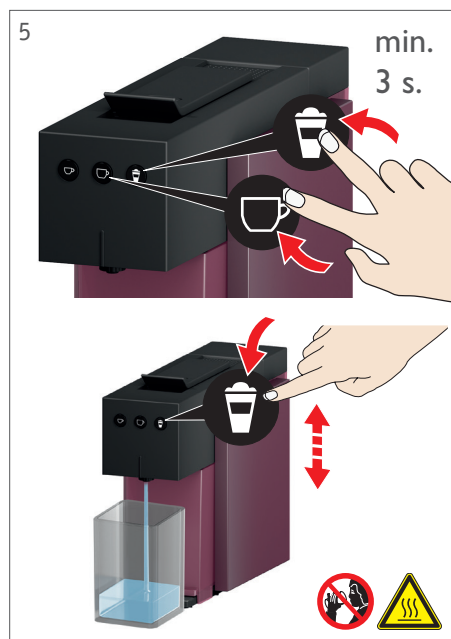
Do not drink the descaling agent – **health hazard**.

5 To activate the descaling program the machine must be in off/standby mode.
1) Press the rinse/milk and "large cup" button simultaneously for 3 seconds.

- 2) Machine will now be programmed to descale and will dispense cold water.
- 3) Press the rinse/milk button, to dispense the solution.
- 4) After solution is dispensed, wait 30 seconds.

Repeat steps 3 and 4 until the water tank is empty.

Note: Both buttons will continue to flash throughout the process.

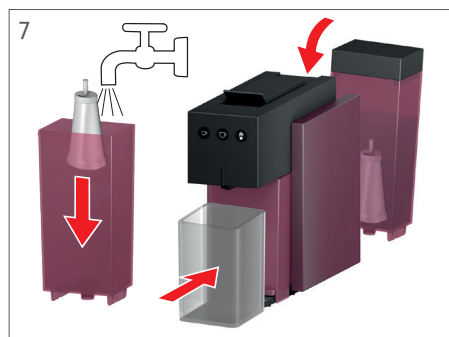


WARNING

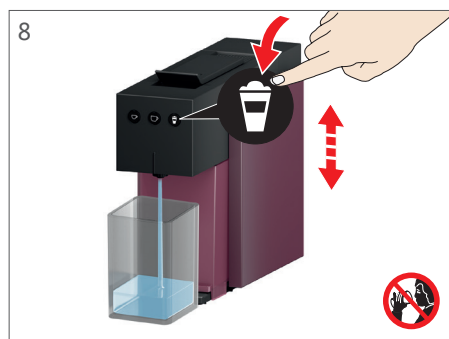
If you descale the appliance only a short time after preparing a drink, the discharged descaling liquid can be very hot at the beginning - scalding hazard.

- 6 Once completed, please empty, rinse out and clean the water tank and the collecting container.

- 7 Reinsert the water filter if applicable. Fill the water tank with fresh water and replace it in the appliance.



- 8 Rinse the appliance with fresh water by pressing the rinse/milk button as often as required until the water tank is empty. Refill this with fresh water, empty and clean the collecting container and replace the drip tray under the spout



- 9 To conclude you will have to exit the descaling program. To do this, press the rinse/milk button and the "Large cup" button simultaneously for at least 3 seconds again. The appliance will finally switch off.

Evaporating residual water (periods of absence/frost protection)



INFO

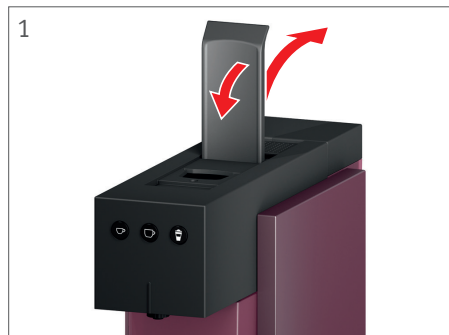
If you leave the appliance unused for longer periods, germs which present a health hazard can form in the residual water. If there is a danger that the appliance is subjected to frost, frozen residual water can damage functionalities. In both cases you should empty the appliance by steaming out the residual water.



WARNING

When steaming out, hot steam (up to 120°C) and hot water are produced - **scalding hazard**. Never reach under the spout, and remain a safe distance away from the spout. The collecting container under the spout contains extremely hot water - **please handle carefully**.

1 Wait until the appliance switches itself off automatically. After this, open and close the lever so that you eject any capsule which might have been inserted.



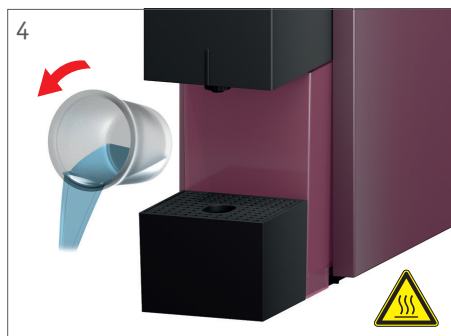
2 Empty the water tank, replace it in the appliance empty and put a collecting container which is suitable for very hot water under the spout.

3 Now press the "Small cup" button and the "Large cup" buttons simultaneously, and keep the buttons pressed for at least 3 seconds. Now release all the buttons again. The appliance will now steam all the residual water out. The appliance will switch itself off automatically after steaming.

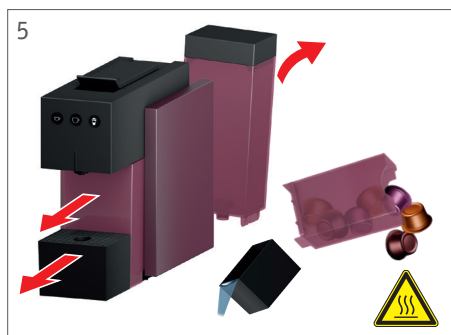


WARNING Very hot water – scalding hazard.

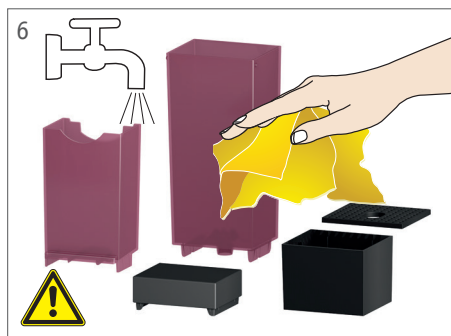
4 Now carefully empty the collecting container with the hot water.



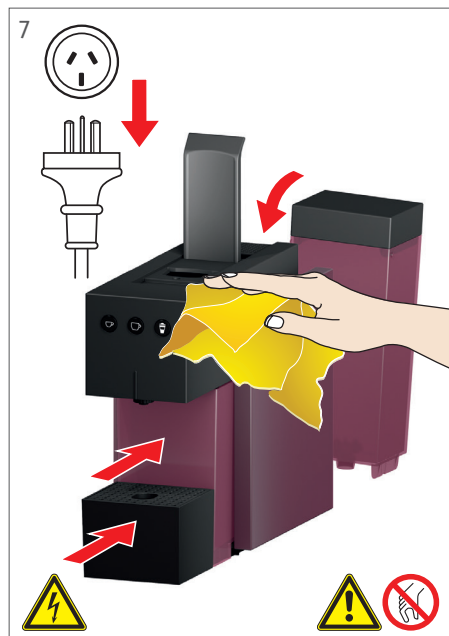
5 Remove the drip tray and the used capsule container and empty them. Remove the water tank.



6 Clean all the containers you have removed and dry them thoroughly.



7 Take the mains plug out of the socket. Open the lever and clean the appliance from outside using a moist cloth. After this, close the lever completely again and replace all the containers in the appliance.



PROHIBITED Do not reach inside – injury hazard.



SAFETY INFORMATION

Risk of damage. Only use a moist cloth and if required, clean warm soapy water for cleaning machine parts. Never use scouring or abrasive cleaning agents. Never place appliance components in the dishwasher.

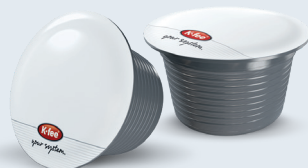
Frequently asked questions



SAFETY INFORMATION

The appliance only functions correctly with drink capsules of any brand which are labelled with the **K-fee® – your system** logo.

Use of non-original capsules can result in the following risks: health risks, damage to the appliance and possible loss of warranty claims.



All function buttons flashing rapidly?

The appliance could be overheated or have a fault. Switch the appliance off, remove the mains plug and allow the appliance to cool down. After this, reinsert the mains plug again and switch the appliance on. If the error message occurs again, please contact our service centre.

Drinks not being prepared properly?

Check to ensure that the lever has been pressed down completely. If, despite this, the error occurs again you should clean the appliance (see instructions p. 18/19: Cleaning with cleaning fluid or p. 20/21: Cleaning with a cleaning capsule) and also descale it (see instructions p. 22/23).

If the water runs out during drinks output: Interrupt drinks preparation by pressing any button. Open and close the lever to eject the capsule, remove the water tank, refill it with fresh water and insert it in the appliance again. Place collecting container under the spout and rinse the appliance out until water flows out of the drinks spout.

Drink dispensing is delayed?

The appliance is heating up.

Liquid capacity during drinks preparation is insufficient?

The system could be calcified. Descal the appliance in accordance with the instructions on p. 22/23. If the problem continues to occur, please check the cup filling capacity you have programmed. If required, reset the appliance to the factory settings (see instructions p. 15) and then re-programme your individually required cup filling capacity (see instructions p. 14).

Drink is not hot enough?

The heating element could be calcified. Descale the appliance in accordance with the instructions on p. 22/23. If the problem continues to occur, please contact our service centre.

Does the appliance need to be descaled even if a water filter is being used?

The use of a water filter increases the descaling intervals considerably, but it cannot completely replace them. The appliance needs to be descaled regularly in any case because mineral deposits can occur depending on your regional water hardness level and the installation site. If using a water filter, we recommend descaling the appliance yearly with a **K-fee® – your system** approved liquid solution. More frequently depending on water hardness in your local area.

What can be done if the lever cannot be closed completely after a capsule has been inserted?

First, ensure that there are no more used capsules in the brewing chamber and that the used capsule container has not been overfilled. Ensure that the new capsule you have inserted is in the correct position.

What can be done if the used capsule container is overfilled and is jamming?


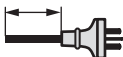


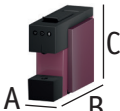




Attempt to remove the container by shaking it slightly.

What is the purpose of automatic switch-off?

If the appliance is not being used, it switches off automatically after 5 minutes. This reduces the energy consumption of your **EXPRESSI** capsule machine considerably: the appliance consumes considerably less power (less than 0.5 W) than it does in operating mode.

During periods of absence and at the end of the brewing day, switch the appliance off at power supply (240V plug).

Specifications / Service

	220 – 240V ~, 50/60 Hz, max. 1455 W
	0.8 m
P	max. 19 bar
	approx. 0.8l (without water filter)
	approx. 2.7 kg
	A = approx. 128 mm B = approx. 345 mm C = approx. 262 mm / 350 mm with open lever
	 max. ca. 149 mm
	10°C – 40°C
	approx. 93°C



INFO

We recommend that you retain the original packaging so that you can return your appliance to an authorised customer service if it ever needs repair.

No guarantee is provided for any damage caused by transport in unsuitable packaging.

If you have any questions or suggestions please contact us:

mail@k-fee-system.com.au



Australia 1800 469 373

Disposal information

The packaging is recyclable. Ask the department responsible in your local council offices for further information about recycling.



The appliance contains valuable materials which can be recycled and reused. For this reason, contact your local waste management recycling centre for correct disposal.



EXPRESSI®



your system.

Warranty Details

REGISTER YOUR PURCHASE AT www.aldi.com.au/en/about-aldi/product-registration TO KEEP UP-TO-DATE WITH IMPORTANT PRODUCT INFORMATION

K-free System capsule machine

The product is guaranteed to be free from defects in workmanship and parts for a period of 24 months from the date of purchase. Defects that occur within this warranty period, under normal use and care, will be repaired, replaced or refunded at our discretion. The benefits conferred by this warranty are in addition to all rights and remedies in respect of the product that the consumer has under the Competition and Consumer Act 2010 and similar state and territory laws.

Our goods come with guarantees that cannot be excluded under the Australian Consumer Law. You are entitled to a replacement or refund for a major failure and for compensation for any other reasonably foreseeable loss or damage. You are also entitled to have the goods repaired or replaced if the goods fail to be of acceptable quality and the failure does not amount to a major failure.

AFTER SALES SUPPORT

  1800 469 373

 www.expressishop.com.au

(Free of charge on land lines; for info on mobile phone surcharges, contact your mobile phone provider)



Notes

Notes

EXPRESSI®



Kruger ANZ
Suite 7
400 Canterbury Road
Surrey Hills, VIC 3127
Australia.

 www.expressishop.com.au

30128655



your system.

Version 4.0
0115593